

Fifth Annual Statistical Report on DWI Court Dispositions In New Mexico

**A report to the Legislative Finance Committee on New
Mexico Driving While Intoxicated (DWI) court
dispositions, 1997 through 2009**



**Supreme Court of New Mexico
Administrative Office of the Courts**

April, 2010

Contents

Introduction	1
Calendar Year 2010 Statistical Summary	1
Misdemeanor Dismissals and Felony Refilings	1
How DWI Convictions are Counted	1
DWI Statistical Tables	3-7
DWI Line Charts	8-16

A Statistical Report on DWI in New Mexico, 1997 - 2009

Prepared by the Administrative Office of the Courts

Introduction

The Administrative Office of the Courts (AOC) is pleased to present the Fifth Annual Statistical Report on DWI Court Dispositions in New Mexico. This report contains statistical information on DWI cases adjudicated from 1997 through 2009, in New Mexico magistrate courts, district courts, municipal courts, and the Bernalillo County Metropolitan Court (BCMC).

Calendar Year 2009 Statistical Summary

For calendar year 2009, 20,382 DWI cases were adjudicated by state and municipal courts in New Mexico. District courts throughout the state disposed of 2,848 felony DWI cases, magistrate courts disposed of 9,053 misdemeanor DWI cases, and the BCMC disposed of 6,648 misdemeanor DWI cases. In addition, 1,833 DWI cases were charged under municipal ordinances and disposed in municipal courts.

During 2009, conviction rates for magistrate courts dropped slightly, from 70.7 percent to 69.2 percent. Conviction rates for district courts rose very slightly, from 82.3 percent to 82.4 percent, and the conviction rate for the BCMC dropped from 69.4 percent to 66.6 percent. The conviction rate also dropped slightly for municipal courts, from 87.5 percent to 87.0 percent. These slight increases and decreases are not significant and could reflect random statistical variations rather than imply a change in procedure or process that affected overall conviction rates.

Misdemeanor Dismissals and Felony Refilings

A comparison of 2009 magistrate DWI case dismissals and district court felony DWI case initiations shows that 11 percent of misdemeanor court dismissals were later refiled by prosecutors as felonies in district courts. By factoring in these refiled cases, the overall magistrate and BCMC dismissal rate was effectively reduced by 2.7 percent. While these cases were technically "dismissed" in a magistrate court or the BCMC, the defendants associated with these dismissed cases were merely re-charged by prosecutors as felons rather than misdemeanants, and the overall dismissal rates for these re-filed cases are ultimately accounted for in district court conviction rates. As such, the BCMC and magistrate court disposition tables on pages 4 and 6, should be compared to the prosecutor refile table on page 7, for a more complete and accurate picture of the overall magistrate and BCMC DWI dismissal rate.

How DWI Convictions are Counted

As in most states, the New Mexico DWI court process is complex. At present, district courts, magistrate courts, municipal courts and the BCMC all hear DWI cases. Preliminary hearings for felony DWI cases are first heard in a magistrate court in all counties except Bernalillo County. During a preliminary hearing, when a magistrate

How DWI Convictions are Counted (continued)

judge rules that probable cause exists for a particular DWI case, that case will be transferred to a district court for a felony trial.

These transfers, called “bind-overs,” are not dismissals, but are simply an expedient means of transferring the most serious DWI cases from a limited jurisdiction court to a general jurisdiction felony court. Since 1997, the bind-over rate has fluctuated between 8.5 and 14.5 percent of magistrate DWI case initiations. While felony bind-over statistics are not included in this report, all cases bound over to district courts are eventually counted as district court DWI adjudications.

Even when all DWI charges against a defendant are dismissed, field research has shown that many dismissed DWI cases actually contain convictions on underlying non-DWI traffic charges. These ancillary traffic charges result when a driver is stopped for a traffic infraction and the arresting officer smells alcohol, or observes that the driver appears intoxicated. When a driver is initially charged with DWI, the officer may also cite the driver for underlying traffic offenses. If the DWI charge is later dismissed in a court, the judge may convict the defendant on the associated traffic charges. For purposes of this report, convictions for such underlying traffic offenses were not counted as DWI convictions.

DWI Cases Disposed For Calendar Years 1997 Through 2009

District Courts By Year

	Total Cases	Total Convictions	Total Acquittals	Conditionally Discharged	Other Dispositions	Total Dismissed	Dismissed by Prosecutor	Dismissed by Court	Dismissed 6 Month Rule	Dismissed Failure To Appear	Other Dismissals
1997	1224	84.6%	0.4%	0.0%	3.8%	11.2%	6.0%	0.0%	0.0%	0.0%	5.1%
1998	1460	82.2%	0.3%	0.0%	2.7%	14.9%	8.9%	0.0%	0.0%	0.0%	6.0%
1999	1705	83.6%	0.5%	0.0%	2.8%	13.1%	8.3%	0.0%	0.2%	0.0%	4.6%
2000	1753	78.4%	0.5%	0.1%	1.1%	20.0%	9.1%	0.1%	0.3%	0.0%	10.4%
2001	1687	84.7%	0.4%	0.1%	0.5%	14.3%	7.3%	0.0%	0.2%	0.0%	6.8%
2002	1936	84.4%	0.5%	0.2%	2.0%	13.0%	5.7%	0.0%	0.3%	0.0%	6.9%
2003	1960	85.2%	0.6%	0.2%	0.7%	13.4%	10.3%	0.6%	0.3%	0.0%	2.2%
2004	2218	86.4%	0.5%	0.7%	0.0%	12.4%	10.3%	1.2%	0.5%	0.0%	0.3%
2005	2326	83.4%	0.9%	0.7%	0.0%	15.0%	11.7%	2.5%	0.5%	0.0%	0.4%
2006	2416	82.3%	1.2%	1.0%	0.0%	15.5%	12.9%	1.8%	0.5%	0.0%	0.3%
2007	2725	83.5%	1.1%	0.4%	0.0%	15.0%	12.5%	1.8%	0.4%	0.0%	0.3%
2008	3111	82.3%	1.0%	0.0%	0.2%	16.4%	14.2%	1.6%	0.5%	0.0%	0.2%
2009	2826	82.5%	0.9%	0.5%	0.0%	16.1%	13.0%	2.3%	0.5%	0.0%	0.2%

Magistrate Courts By Year

	Total Cases	Total Convictions	Total Acquittals	Conditionally Discharged	Other Dispositions	Total Dismissed	Dismissed by Prosecutor	Dismissed by Court	Dismissed 6 Month Rule	Dismissed Failure To Appear	Other Dismissals
1997	7458	80.1%	0.8%	0.2%	0.5%	18.5%	5.8%	0.0%	0.8%	0.0%	11.9%
1998	7161	77.5%	0.6%	0.1%	0.6%	21.2%	6.1%	0.1%	0.6%	0.0%	14.4%
1999	7412	77.0%	0.7%	0.1%	0.9%	21.3%	7.6%	0.1%	1.0%	0.0%	12.6%
2000	7415	76.5%	0.5%	0.3%	0.3%	22.5%	8.0%	0.1%	0.8%	0.1%	13.4%
2001	7119	76.1%	0.6%	0.2%	0.6%	22.5%	8.9%	0.2%	0.9%	0.1%	12.3%
2002	6713	77.7%	0.8%	0.2%	0.9%	20.3%	8.4%	0.1%	0.9%	0.1%	10.8%
2003	7529	76.8%	0.6%	0.2%	1.1%	21.3%	10.0%	0.2%	0.8%	0.0%	10.3%
2004	8181	75.5%	0.9%	0.1%	0.9%	22.6%	12.7%	0.4%	1.3%	0.2%	7.9%
2005	7633	72.4%	0.7%	0.0%	0.0%	26.8%	21.7%	1.5%	0.9%	0.9%	1.8%
2006	7571	69.6%	0.8%	0.0%	0.1%	29.6%	25.3%	1.2%	0.8%	0.7%	1.6%
2007	7914	71.3%	0.9%	0.0%	0.0%	27.7%	23.3%	1.8%	1.0%	0.4%	1.1%
2008	8034	70.7%	0.7%	0.0%	0.1%	28.5%	23.7%	1.9%	1.0%	0.3%	1.6%
2009	9032	69.3%	1.2%	0.0%	0.1%	29.4%	24.3%	1.8%	1.3%	0.8%	1.2%

Total Cases	Cases disposed in a year
Total Convictions	Conviction rate for cases disposed
Total Acquittals	Acquittal rate for cases disposed
Conditionally Discharged	Conditional discharge rate for cases disposed
Other Dispositions	Cases not dismissed but which do not fit into column heading categories
Total Dismissed	Dismissal rate for all cases disposed
Dismissed by Prosecutor	Cases dismissed by a court subsequent to motion for dismissal by a prosecutor (for net dismissal rate see page 7)
Dismissed By Court	Cases dismissed by a judge
Dismissed 6 Month Rule	Cases dismissed under the six month rule
Dismissed Failure To Appear	Cases dismissed due to failure of an officer/witness to appear
Other Dismissal	Cases dismissed for other reasons

DWI Cases Disposed For Calendar Years 1997 Through 2009

Bernalillo Metropolitan Court By Year

	Total Cases	Total Convictions	Total Acquittals	Conditionally Discharged	Other Dispositions	Total Dismissed	Dismissed by Prosecutor	Dismissed by Court	Dismissed 6 Month Rule	Dismissed Failure To Appear	Other Dismissals
1997	2869	58.3%	1.9%	0.0%	0.1%	39.7%	5.5%	5.0%	3.1%	23.0%	3.1%
1998	5119	67.0%	2.0%	0.0%	0.0%	31.0%	3.9%	5.2%	2.1%	17.3%	2.6%
1999	4980	64.4%	2.6%	0.0%	0.1%	33.0%	3.3%	5.0%	4.1%	17.2%	3.4%
2000	4899	69.5%	1.6%	0.0%	0.0%	28.9%	4.3%	3.9%	3.7%	14.7%	2.3%
2001	6073	70.6%	1.4%	0.0%	0.1%	28.0%	4.7%	3.9%	4.0%	12.9%	2.5%
2002	6144	66.1%	1.6%	0.0%	0.0%	32.2%	4.7%	5.0%	4.6%	15.3%	2.7%
2003	6706	62.6%	1.8%	0.0%	0.0%	35.7%	6.9%	5.9%	5.5%	14.9%	2.5%
2004	6407	60.0%	2.0%	0.0%	0.0%	38.0%	5.0%	5.5%	5.3%	18.8%	3.3%
2005	6536	64.2%	2.0%	0.0%	0.0%	33.7%	4.7%	4.5%	2.8%	19.4%	2.3%
2006	5940	69.1%	2.0%	0.0%	0.0%	28.9%	8.4%	1.0%	1.3%	17.9%	0.4%
2007	6851	71.8%	1.3%	0.0%	0.0%	26.8%	9.3%	0.7%	1.4%	14.7%	0.7%
2008	7135	69.4%	0.7%	0.0%	0.0%	29.9%	9.4%	0.7%	0.8%	18.2%	0.9%
2009	6648	66.6%	0.7%	0.0%	0.0%	32.7%	13.6%	0.5%	0.7%	16.1%	1.8%

Municipal Courts By Year

	Total Cases	Total Convictions	Total Acquittals	Conditionally Discharged	Other Dispositions	Total Dismissed	Dismissed by Prosecutor	Dismissed by Court	Dismissed 6 Month Rule	Dismissed Failure To Appear	Other Dismissals
1997	2315	98.1%	0.0%	0.0%	1.8%	0.0%	0.0%	0.0%	0.0%	0.0%	0.0%
1998	2435	98.4%	0.0%	0.0%	1.6%	0.0%	0.0%	0.0%	0.0%	0.0%	0.0%
1999	2284	98.1%	0.0%	0.0%	1.3%	0.6%	0.3%	0.0%	0.0%	0.0%	0.3%
2000	2472	96.9%	0.0%	0.0%	1.7%	1.3%	0.3%	0.0%	0.0%	0.0%	1.0%
2001	2332	98.2%	0.0%	0.0%	1.8%	0.0%	0.0%	0.0%	0.0%	0.0%	0.0%
2002	1725	97.8%	0.2%	0.0%	1.9%	0.1%	0.0%	0.1%	0.0%	0.0%	0.0%
2003	1761	98.5%	0.1%	0.0%	1.5%	0.0%	0.0%	0.0%	0.0%	0.0%	0.0%
2004	2233	97.3%	0.6%	0.0%	2.0%	0.1%	0.0%	0.0%	0.0%	0.0%	0.0%
2005	2137	95.9%	0.8%	0.0%	1.8%	1.5%	1.3%	0.1%	0.1%	0.0%	0.0%
2006	2224	84.7%	0.9%	0.0%	3.6%	10.8%	6.8%	1.9%	0.4%	0.3%	1.4%
2007	2298	88.3%	1.3%	0.0%	0.0%	10.4%	4.7%	3.5%	0.2%	0.3%	1.7%
2008	1923	87.5%	0.9%	0.0%	0.6%	11.0%	5.1%	1.8%	0.8%	0.4%	2.9%
2009	1833	87.0%	1.7%	0.0%	0.2%	11.0%	5.9%	1.4%	0.6%	0.1%	2.9%

Total Cases	Cases disposed in a year
Total Convictions	Conviction rate for cases disposed
Total Acquittals	Acquittal rate for cases disposed
Conditionally Discharged	Conditional discharge rate for cases disposed
Other Dispositions	Cases not dismissed but which do not fit into column heading categories
Total Dismissed	Dismissal rate for all cases disposed
Dismissed by Prosecutor	Cases dismissed by a court subsequent to motion for dismissal by a prosecutor (for net dismissal rate see page 7)
Dismissed By Court	Cases dismissed by a judge
Dismissed 6 Month Rule	Cases dismissed under the six month rule
Dismissed Failure To Appear	Cases dismissed due to failure of an officer/witness to appear
Other Dismissal	Cases dismissed for other reasons

DWI Cases Disposed For Calendar Year 2009

District Courts By Location

County	Total Cases	Total Convictions	Total Acquittals	Conditionally Discharged	Other Dispositions	Total Dismissed	Dismissed by Prosecutor	Dismissed by Court	Dismissed 6 Month Rule	Dismissed Failure To Appear	Other Dismissals
BERNALILLO	862	88.7%	0.1%	0.3%	0.0%	10.8%	9.7%	0.8%	0.2%	0.0%	0.0%
CATRON	1	0.0%	0.0%	0.0%	0.0%	100.0%	100.0%	0.0%	0.0%	0.0%	0.0%
CHAVES	84	69.0%	6.0%	0.0%	0.0%	25.0%	19.0%	4.8%	0.0%	0.0%	1.2%
CIBOLA	49	75.5%	0.0%	0.0%	0.0%	24.5%	20.4%	2.0%	0.0%	0.0%	2.0%
COLFAX	12	91.7%	0.0%	0.0%	0.0%	8.3%	8.3%	0.0%	0.0%	0.0%	0.0%
CURRY	132	85.6%	0.0%	0.0%	0.0%	14.4%	9.1%	5.3%	0.0%	0.0%	0.0%
DE BACA	4	75.0%	0.0%	0.0%	0.0%	25.0%	25.0%	0.0%	0.0%	0.0%	0.0%
DONA ANA	423	76.1%	1.2%	0.0%	0.0%	22.7%	19.4%	2.1%	0.5%	0.0%	0.7%
EDDY	48	85.4%	4.2%	0.0%	0.0%	10.4%	8.3%	2.1%	0.0%	0.0%	0.0%
GRANT	34	85.3%	0.0%	0.0%	0.0%	14.7%	14.7%	0.0%	0.0%	0.0%	0.0%
GUADALUPE	4	100.0%	0.0%	0.0%	0.0%	0.0%	0.0%	0.0%	0.0%	0.0%	0.0%
HARDING	1	100.0%	0.0%	0.0%	0.0%	0.0%	0.0%	0.0%	0.0%	0.0%	0.0%
HIDALGO	12	83.3%	0.0%	0.0%	0.0%	16.7%	16.7%	0.0%	0.0%	0.0%	0.0%
LEA	44	84.1%	2.3%	0.0%	0.0%	13.6%	6.8%	4.5%	2.3%	0.0%	0.0%
LINCOLN	41	90.2%	0.0%	0.0%	0.0%	9.8%	4.9%	4.9%	0.0%	0.0%	0.0%
LOS ALAMOS	6	50.0%	16.7%	0.0%	0.0%	33.3%	16.7%	16.7%	0.0%	0.0%	0.0%
LUNA	19	78.9%	0.0%	0.0%	0.0%	21.1%	15.8%	5.3%	0.0%	0.0%	0.0%
MCKINLEY	91	69.2%	0.0%	0.0%	0.0%	30.8%	23.1%	3.3%	4.4%	0.0%	0.0%
MORA	5	80.0%	0.0%	0.0%	0.0%	20.0%	0.0%	0.0%	20.0%	0.0%	0.0%
OTERO	99	88.9%	0.0%	0.0%	0.0%	11.1%	9.1%	1.0%	0.0%	0.0%	1.0%
QUAY	4	75.0%	0.0%	0.0%	0.0%	25.0%	25.0%	0.0%	0.0%	0.0%	0.0%
RIO ARRIBA	77	70.1%	0.0%	11.7%	0.0%	18.2%	10.4%	7.8%	0.0%	0.0%	0.0%
ROOSEVELT	17	100.0%	0.0%	0.0%	0.0%	0.0%	0.0%	0.0%	0.0%	0.0%	0.0%
SAN JUAN	364	87.9%	2.2%	0.3%	0.0%	9.6%	9.1%	0.5%	0.0%	0.0%	0.0%
SAN MIGUEL	46	82.6%	2.2%	0.0%	0.0%	15.2%	13.0%	2.2%	0.0%	0.0%	0.0%
SANDOVAL	98	78.6%	2.0%	0.0%	0.0%	19.4%	9.2%	5.1%	4.1%	0.0%	1.0%
SANTA FE	134	74.6%	0.0%	1.5%	0.0%	23.9%	18.7%	4.5%	0.7%	0.0%	0.0%
SIERRA	12	50.0%	0.0%	0.0%	0.0%	50.0%	41.7%	8.3%	0.0%	0.0%	0.0%
SOCORRO	29	79.3%	0.0%	0.0%	0.0%	20.7%	13.8%	6.9%	0.0%	0.0%	0.0%
TAOS	17	52.9%	0.0%	0.0%	0.0%	47.1%	41.2%	5.9%	0.0%	0.0%	0.0%
TORRANCE	19	73.7%	0.0%	0.0%	0.0%	26.3%	21.1%	5.3%	0.0%	0.0%	0.0%
UNION	0										
VALENCIA	38	76.3%	0.0%	0.0%	0.0%	23.7%	21.1%	2.6%	0.0%	0.0%	0.0%
Total	2826	82.5%	0.9%	0.5%	0.0%	16.1%	13.0%	2.3%	0.5%	0.0%	0.2%

Total Cases	Cases disposed in a year
Total Convictions	Conviction rate for cases disposed
Total Acquittals	Acquittal rate for cases disposed
Conditionally Discharged	Conditional discharge rate for cases disposed
Other Dispositions	Cases not dismissed but which do not fit into column heading categories
Total Dismissed	Dismissal rate for all cases disposed
Dismissed by Prosecutor	Cases dismissed by a court subsequent to motion for dismissal by a prosecutor (for net dismissal rate see page 7)
Dismissed By Court	Cases dismissed by a judge
Dismissed 6 Month Rule	Cases dismissed under the six month rule
Dismissed Failure To Appear	Cases dismissed due to failure of an officer/witness to appear
Other Dismissal	Cases dismissed for other reasons

DWI Cases Disposed For Calendar Year 2009

Magistrate Courts By Location

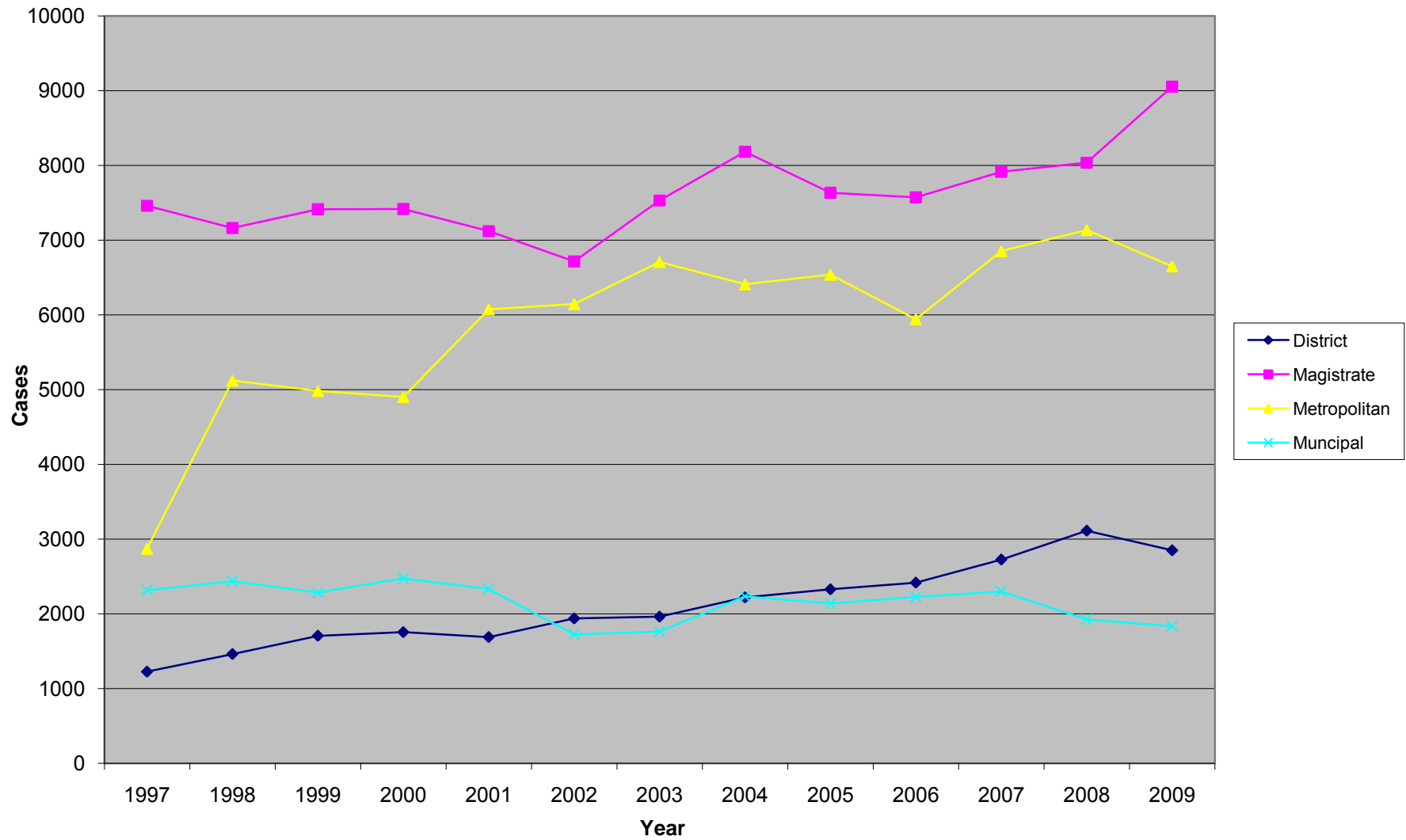
County	Total Cases	Total Convictions	Total Acquittals	Conditionally Discharged	Other Dispositions	Total Dismissed	Dismissed by Prosecutor	Dismissed by Court	Dismissed 6 Month Rule	Dismissed Failure To Appear	Other Dismissals
CATRON	20	80.0%	5.0%	0.0%	0.0%	15.0%	15.0%	0.0%	0.0%	0.0%	0.0%
CHAVES	330	76.1%	2.4%	0.0%	0.0%	21.5%	19.1%	2.1%	0.0%	0.0%	0.3%
CIBOLA	283	69.3%	0.4%	0.0%	0.0%	30.4%	26.5%	2.1%	0.0%	1.4%	0.4%
COLFAX	78	80.8%	1.3%	0.0%	0.0%	17.9%	15.4%	0.0%	0.0%	0.0%	2.6%
CURRY	316	64.6%	1.3%	0.0%	0.3%	33.9%	32.6%	1.3%	0.0%	0.0%	0.0%
DE BACA	10	80.0%	0.0%	0.0%	0.0%	20.0%	20.0%	0.0%	0.0%	0.0%	0.0%
DONA ANA	1352	73.9%	0.6%	0.0%	0.1%	25.4%	24.5%	0.1%	0.7%	0.0%	0.1%
EDDY	164	91.5%	3.0%	0.0%	0.0%	5.5%	3.7%	0.6%	0.0%	1.2%	0.0%
GRANT	222	80.6%	2.3%	0.0%	0.0%	17.1%	14.9%	1.4%	0.5%	0.5%	0.0%
GUADALUPE	63	82.5%	0.0%	0.0%	0.0%	17.5%	17.5%	0.0%	0.0%	0.0%	0.0%
HARDING	3	33.3%	0.0%	0.0%	0.0%	66.7%	66.7%	0.0%	0.0%	0.0%	0.0%
HIDALGO	89	89.9%	0.0%	0.0%	1.1%	9.0%	5.6%	0.0%	0.0%	2.2%	1.1%
LEA	215	77.2%	0.5%	0.0%	0.0%	22.3%	17.7%	2.3%	1.4%	0.5%	0.5%
LINCOLN	177	81.4%	1.1%	0.0%	0.0%	17.5%	16.4%	0.6%	0.0%	0.0%	0.6%
LOS ALAMOS	29	62.1%	0.0%	0.0%	0.0%	37.9%	37.9%	0.0%	0.0%	0.0%	0.0%
LUNA	162	66.7%	3.1%	0.0%	0.0%	30.2%	28.4%	0.0%	1.9%	0.0%	0.0%
MCKINLEY	1088	61.3%	1.3%	0.0%	0.1%	37.3%	30.4%	2.9%	2.7%	0.9%	0.4%
MORA	36	69.4%	5.6%	0.0%	0.0%	25.0%	25.0%	0.0%	0.0%	0.0%	0.0%
OTERO	186	86.0%	3.2%	0.0%	0.5%	10.2%	8.6%	1.1%	0.0%	0.0%	0.5%
QUAY	71	78.9%	0.0%	0.0%	0.0%	21.1%	21.1%	0.0%	0.0%	0.0%	0.0%
RIO ARriba	347	56.5%	0.3%	0.0%	0.0%	43.2%	30.8%	0.6%	1.2%	0.0%	10.7%
ROOSEVELT	125	85.6%	1.6%	0.0%	0.0%	12.8%	10.4%	1.6%	0.0%	0.0%	0.8%
SAN JUAN	1083	81.2%	1.6%	0.0%	0.0%	17.3%	14.2%	2.8%	0.3%	0.0%	0.0%
SAN MIGUEL	238	81.1%	1.7%	0.0%	0.0%	17.2%	16.4%	0.8%	0.0%	0.0%	0.0%
SANDOVAL	258	59.3%	1.2%	0.0%	0.0%	39.5%	31.0%	7.0%	0.4%	0.8%	0.4%
SANTA FE	1058	50.4%	0.8%	0.0%	0.2%	48.7%	38.9%	3.5%	5.6%	0.3%	0.4%
SIERRA	87	79.3%	0.0%	0.0%	1.1%	19.5%	16.1%	1.1%	0.0%	0.0%	2.3%
SOCORRO	245	75.9%	2.0%	0.0%	0.0%	22.0%	19.6%	1.2%	0.4%	0.0%	0.8%
TAOS	189	58.2%	0.0%	0.0%	0.0%	41.8%	37.6%	3.2%	1.1%	0.0%	0.0%
TORRANCE	92	82.6%	3.3%	0.0%	0.0%	14.1%	10.9%	1.1%	1.1%	0.0%	1.1%
UNION	19	78.9%	0.0%	0.0%	0.0%	21.1%	21.1%	0.0%	0.0%	0.0%	0.0%
VALENCIA	397	49.6%	1.0%	0.0%	0.0%	49.4%	24.9%	0.8%	0.8%	11.6%	11.3%
Total	9032	69.3%	1.2%	0.0%	0.1%	29.4%	24.3%	1.8%	1.3%	0.8%	1.2%

Total Cases	Cases disposed in a year
Total Convictions	Conviction rate for cases disposed
Total Acquittals	Acquittal rate for cases disposed
Conditionally Discharged	Conditional discharge rate for cases disposed
Other Dispositions	Cases not dismissed but which do not fit into column heading categories
Total Dismissed	Dismissal rate for all cases disposed
Dismissed by Prosecutor	Cases dismissed by a court subsequent to motion for dismissal by a prosecutor (for net dismissal rate see page 7)
Dismissed By Court	Cases dismissed by a judge
Dismissed 6 Month Rule	Cases dismissed under the six month rule
Dismissed Failure To Appear	Cases dismissed due to failure of an officer/witness to appear
Other Dismissal	Cases dismissed for other reasons

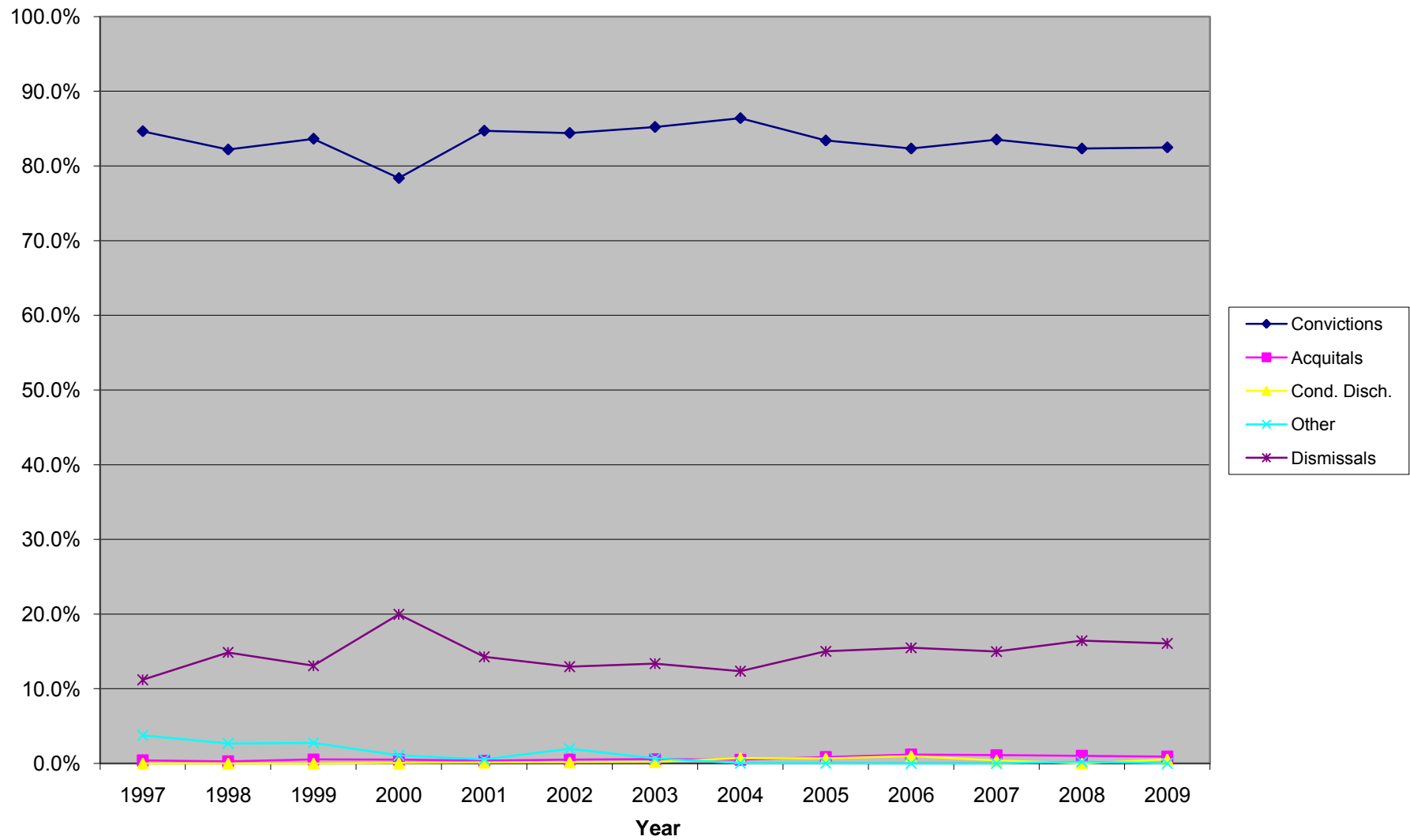
**Impact of Magistrate Court and Bernalillo Metropolitan
Court DWI Cases Refiled in District Court on Dismissed
by Prosecutor Rate for 2009**

County	Cases Dismissed by Prosecutor	Cases Refiled as Felony DWI By Prosecutor	Percentage of Prosecutor Dismissals Refiled as Felony DWI	Total Dismissal Rate Before Subtracting Refiled Cases	Net Dismissal Rate After Subtracting Refiled Cases
BERNALILLO	905	120	13.3%	32.7%	30.9%
CATRON	3	0	0.0%	15.0%	15.0%
CHAVES	63	34	54.0%	21.5%	11.2%
CIBOLA	75	27	36.0%	30.4%	20.8%
COLFAX	13	0	0.0%	17.9%	17.9%
CURRY	114	73	64.0%	36.1%	13.8%
DE BACA	2	0	0.0%	20.0%	20.0%
DONA ANA	333	143	42.9%	25.5%	15.0%
EDDY	6	2	33.3%	5.5%	4.3%
GRANT	33	2	6.1%	17.1%	16.2%
GUADALUPE	11	1	9.1%	17.5%	15.9%
HARDING	2	1	50.0%	66.7%	33.3%
HIDALGO	5	2	40.0%	9.0%	6.7%
LEA	38	0	0.0%	22.3%	22.3%
LINCOLN	29	2	6.9%	17.5%	16.4%
LOS ALAMOS	11	4	36.4%	37.9%	24.1%
LUNA	46	2	4.3%	30.2%	29.0%
MCKINLEY	333	21	6.3%	37.5%	35.6%
MORA	9	3	33.3%	25.0%	16.7%
OTERO	17	2	11.8%	11.3%	10.2%
QUAY	15	1	6.7%	21.1%	19.7%
RIO ARRIBA	107	11	10.3%	43.2%	40.1%
ROOSEVELT	13	1	7.7%	12.8%	12.0%
SAN JUAN	154	0	0.0%	17.3%	17.3%
SAN MIGUEL	39	0	0.0%	17.2%	17.2%
SANDOVAL	80	13	16.3%	39.5%	34.5%
SANTA FE	412	29	7.0%	48.7%	45.9%
SIERRA	16	0	0.0%	19.8%	19.8%
SOCORRO	48	2	4.2%	22.0%	21.2%
TAOS	71	2	2.8%	41.1%	40.1%
TORRANCE	10	1	10.0%	14.0%	12.9%
UNION	4	0	0.0%	21.1%	21.1%
VALENCIA	99	34	34.3%	49.2%	40.7%

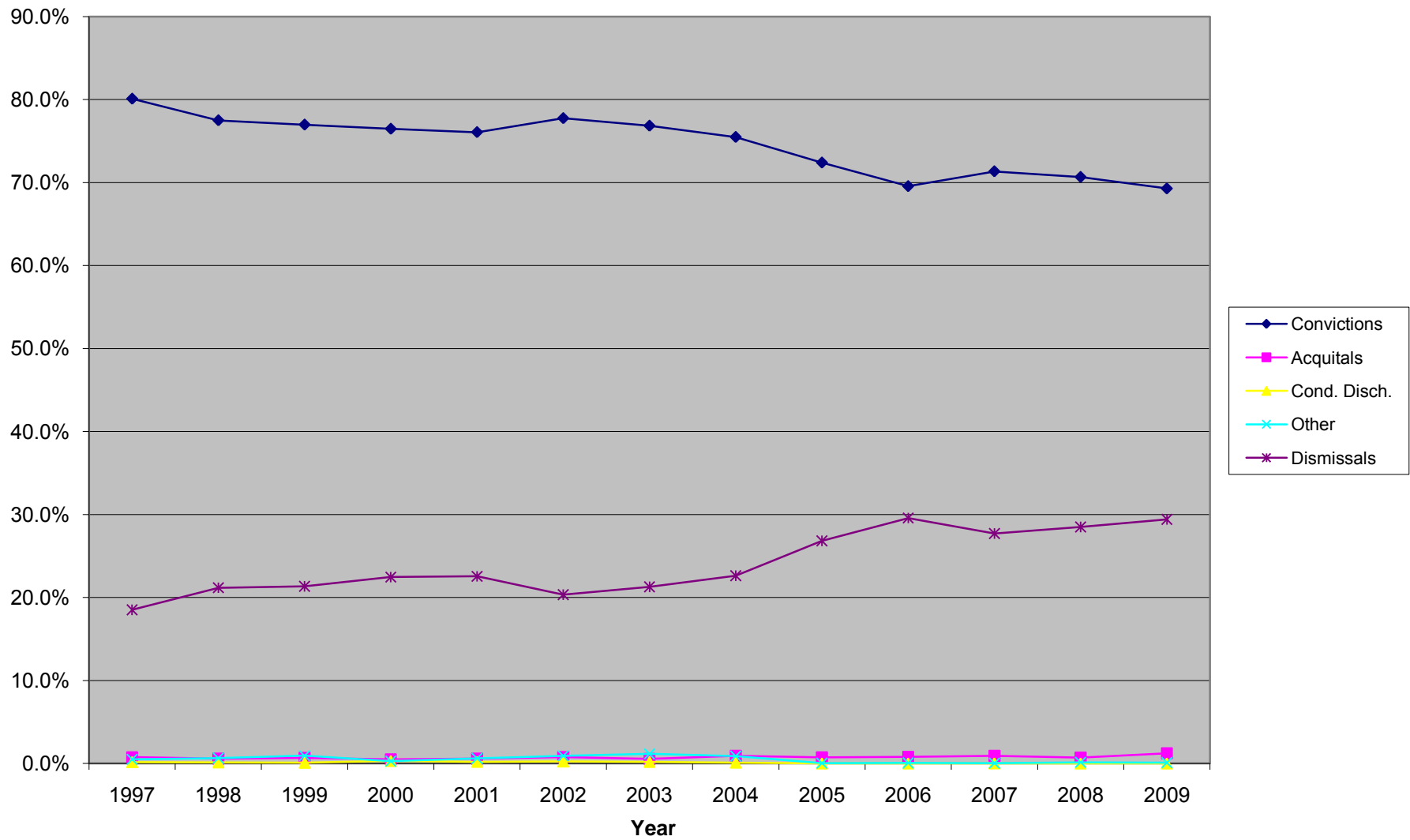
DWI Cases By Year



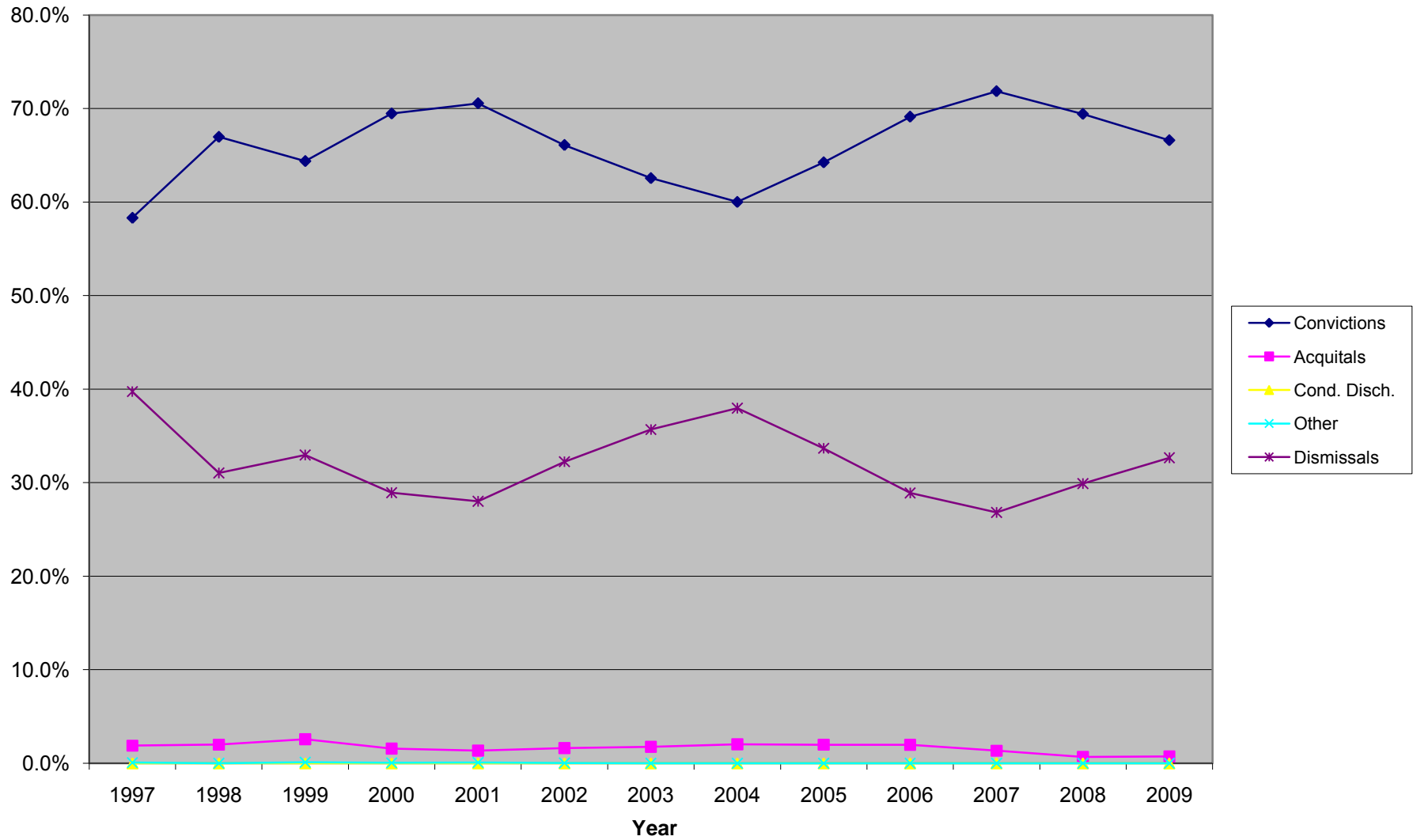
District Court By Year



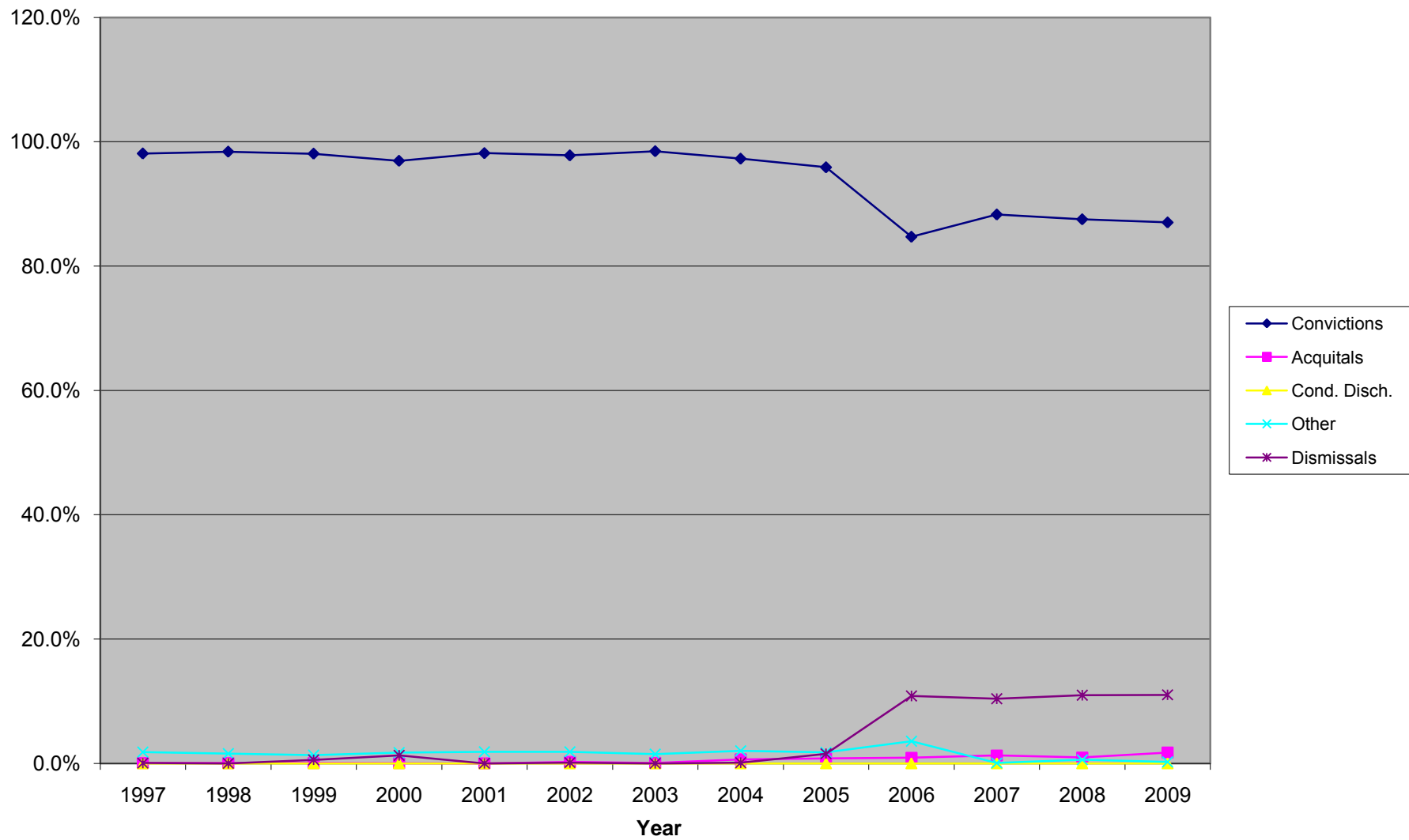
Magistrate By Year



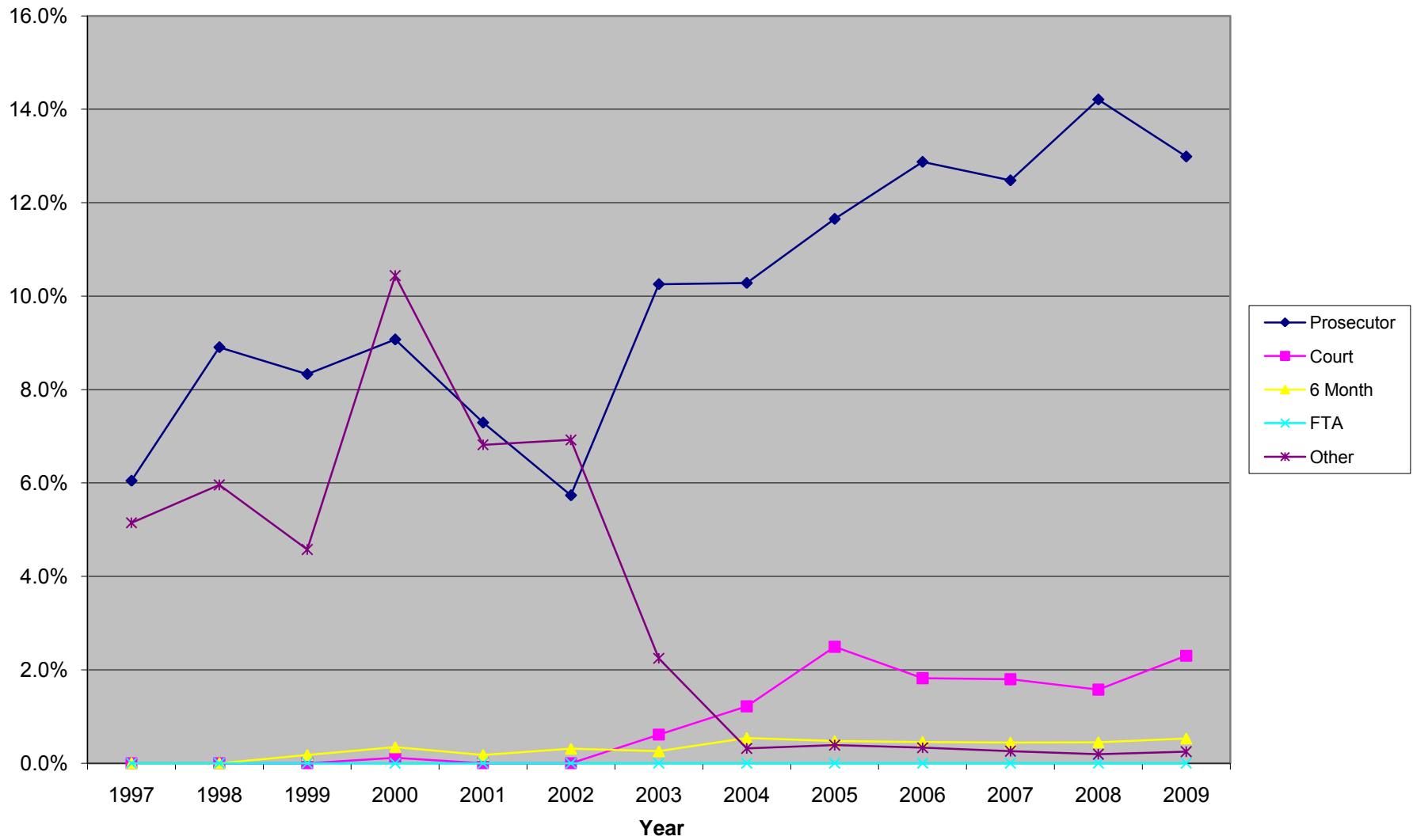
Bern. Metropolitan By Year



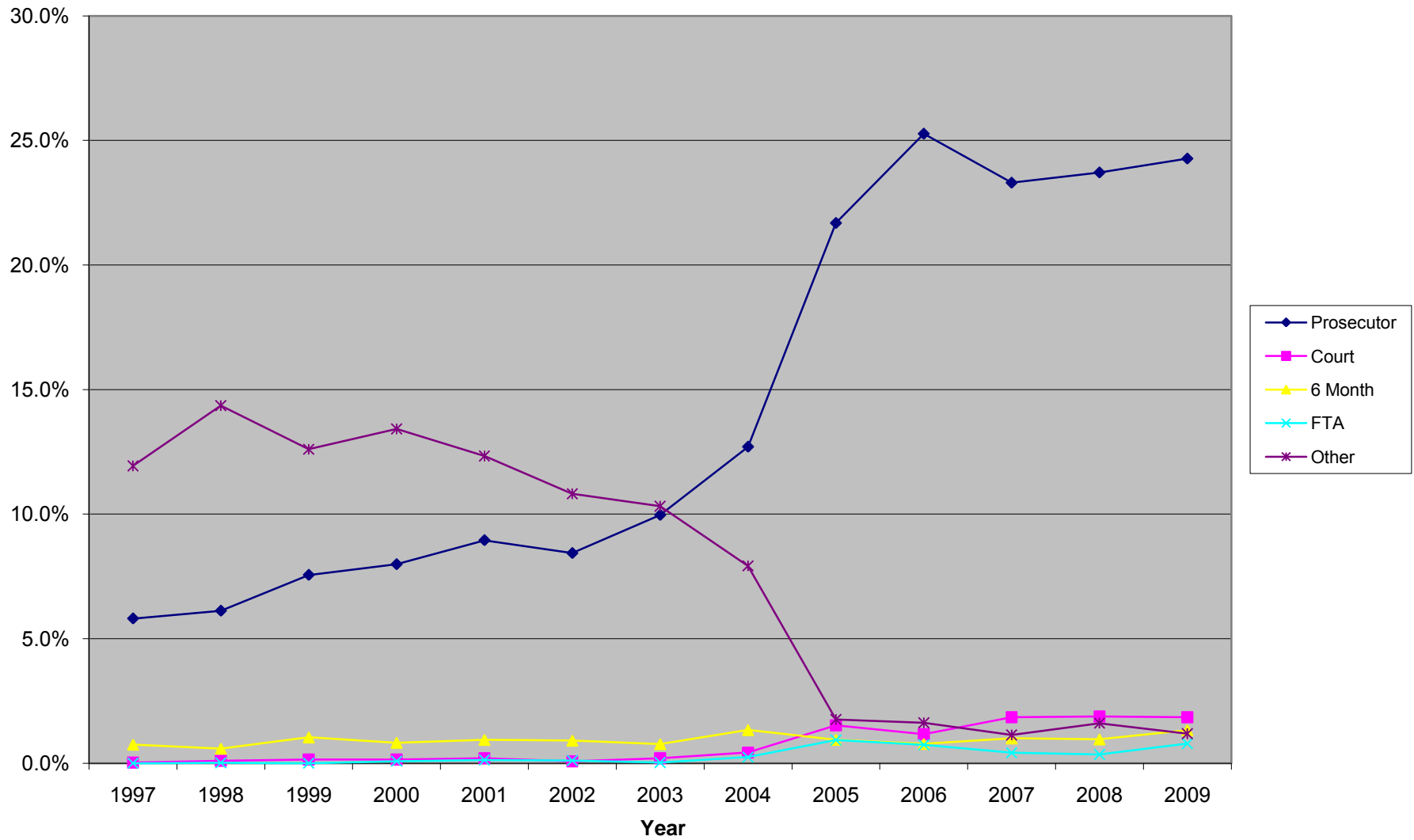
Municipal By Year



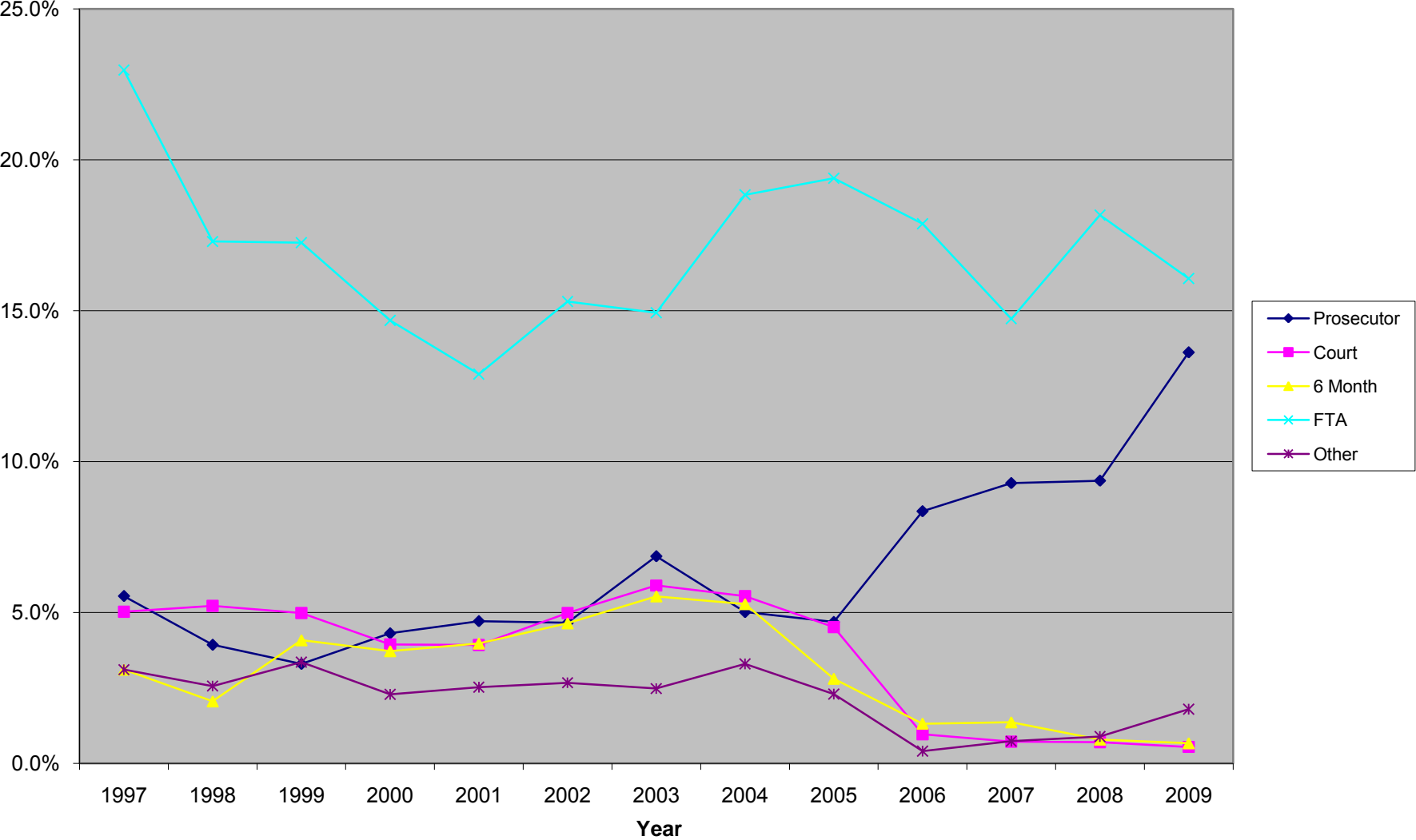
District Dismissals



Magistrate Dismissals



Bern. Metro. Dismissals



Municipal Dismissals

