

# **Sixth Annual Statistical Report on DWI Court Dispositions In New Mexico**

**A report to the Legislative Finance Committee on New  
Mexico Driving While Intoxicated (DWI) court  
dispositions, 1997 through 2010**



**Supreme Court of New Mexico  
Administrative Office of the Courts**

**April, 2011**

# *Contents*

<b>Introduction</b>	<b>1</b>
<b>Calendar Year 2010 Statistical Summary</b>	<b>1</b>
<b>Misdemeanor Dismissals and Felony Refilings</b>	<b>1</b>
<b>How DWI Convictions are Counted</b>	<b>1</b>
<b>DWI Statistical Tables</b>	<b>3-7</b>
<b>DWI Line Charts</b>	<b>8-16</b>

# **A Statistical Report on DWI in New Mexico, 1997 - 2010**

*Prepared by the Administrative Office of the Courts*

## **Introduction**

The Administrative Office of the Courts (AOC) is pleased to present the Sixth Annual Statistical Report on DWI Court Dispositions in New Mexico. This report contains statistical information on DWI cases adjudicated from 1997 through 2010, in New Mexico magistrate courts, district courts, municipal courts, and the Bernalillo County Metropolitan Court (BCMC).

## **Calendar Year 2010 Statistical Summary**

For calendar year 2010, 17,827 DWI cases were adjudicated by state and municipal courts in New Mexico. District courts throughout the state disposed of 2,276 felony DWI cases, magistrate courts disposed of 8,324 misdemeanor DWI cases, and the BCMC disposed of 5,497 misdemeanor DWI cases. In addition, 1,730 DWI cases were charged under municipal ordinances and disposed in municipal courts.

During 2010, conviction rates for magistrate courts dropped from 69.3, percent to 68.7 percent. Conviction rates for district courts dropped from 82.5 percent to 80.6 percent, and the conviction rate for the BCMC dropped from 66.6 percent to 65.4 percent. The conviction rate increased slightly for municipal courts, from 87.0 percent to 87.6 percent.

## **Misdemeanor Dismissals and Felony Refilings**

A comparison of 2010 magistrate DWI case dismissals and district court felony DWI case initiations shows that 14.6 percent of misdemeanor court dismissals were later refiled by prosecutors as felonies in district courts. By factoring in these refiled cases, the overall magistrate and BCMC dismissal rate was effectively reduced by 3.3 percent. While these cases were technically "dismissed" in a magistrate court or the BCMC, the defendants associated with these dismissed cases were presumably re-charged by prosecutors as felons rather than misdemeanants, and the overall dismissal rates for these re-filed cases are ultimately accounted for in district court disposition rates. As such, magistrate and BCMC court disposition tables on pages 4 and 6, should be compared to the prosecutor refile table on page 7, for a more complete and accurate picture of the overall magistrate and BCMC DWI dismissal rates.

## **How DWI Convictions are Counted**

As in most states, the New Mexico DWI court process is complex. At present, district courts, magistrate courts, municipal courts and the BCMC all hear DWI cases. Preliminary hearings for felony DWI cases are first heard in a magistrate court in all counties except Bernalillo County. During a preliminary hearing, when a magistrate

---

**How DWI  
Convictions are  
Counted  
(continued)**

judge rules that probable cause exists for a particular DWI case, that case will be transferred to a district court for a felony trial.

These transfers, called “bind-overs,” are not dismissals, but are simply an expedient means of transferring the most serious DWI cases from a limited jurisdiction court to a general jurisdiction felony court. Since 1997, the bind-over rate has fluctuated between 8.5 and 14.5 percent of magistrate DWI case initiations. While felony bind-over statistics are not included in this report, all cases bound over to district courts should be eventually counted as district court DWI adjudications.

Even when all DWI charges against a defendant are dismissed, field research has shown that many dismissed DWI cases contain convictions on underlying non-DWI traffic charges. These ancillary traffic charges typically occur when a driver is stopped for a traffic infraction and the arresting officer smells alcohol, or observes that the driver appears intoxicated and then charges the driver with DWI. If the DWI charge is later dismissed in a court, the judge may convict the defendant on the associated traffic charges. For purposes of this report, convictions for such underlying traffic offenses were not counted as DWI convictions.

## DWI Cases Disposed For Calendar Years 1997 Through 2010

### District Courts By Year

	Total Cases	Total Convictions	Total Acquittals	Conditionally Discharged	Other Dispositions	Total Dismissed	Dismissed by Prosecutor	Dismissed by Court	Dismissed 6 Month Rule	Dismissed Failure To Appear	Other Dismissals
1997	1224	84.6%	0.4%	0.0%	3.8%	11.2%	6.0%	0.0%	0.0%	0.0%	5.1%
1998	1460	82.2%	0.3%	0.0%	2.7%	14.9%	8.9%	0.0%	0.0%	0.0%	6.0%
1999	1705	83.6%	0.5%	0.0%	2.8%	13.1%	8.3%	0.0%	0.2%	0.0%	4.6%
2000	1753	78.4%	0.5%	0.1%	1.1%	20.0%	9.1%	0.1%	0.3%	0.0%	10.4%
2001	1687	84.7%	0.4%	0.1%	0.5%	14.3%	7.3%	0.0%	0.2%	0.0%	6.8%
2002	1936	84.4%	0.5%	0.2%	2.0%	13.0%	5.7%	0.0%	0.3%	0.0%	6.9%
2003	1960	85.2%	0.6%	0.2%	0.7%	13.4%	10.3%	0.6%	0.3%	0.0%	2.2%
2004	2218	86.4%	0.5%	0.7%	0.0%	12.4%	10.3%	1.2%	0.5%	0.0%	0.3%
2005	2326	83.4%	0.9%	0.7%	0.0%	15.0%	11.7%	2.5%	0.5%	0.0%	0.4%
2006	2416	82.3%	1.2%	1.0%	0.0%	15.5%	12.9%	1.8%	0.5%	0.0%	0.3%
2007	2725	83.5%	1.1%	0.4%	0.0%	15.0%	12.5%	1.8%	0.4%	0.0%	0.3%
2008	3111	82.3%	1.0%	0.0%	0.2%	16.4%	14.2%	1.6%	0.5%	0.0%	0.2%
2009	2826	82.5%	0.9%	0.5%	0.0%	16.1%	13.0%	2.3%	0.5%	0.0%	0.2%
2010	2276	80.6%	1.4%	0.0%	0.0%	17.9%	14.4%	2.6%	0.6%	0.0%	0.3%

### Magistrate Courts By Year

	Total Cases	Total Convictions	Total Acquittals	Conditionally Discharged	Other Dispositions	Total Dismissed	Dismissed by Prosecutor	Dismissed by Court	Dismissed 6 Month Rule	Dismissed Failure To Appear	Other Dismissals
1997	7458	80.1%	0.8%	0.2%	0.5%	18.5%	5.8%	0.0%	0.8%	0.0%	11.9%
1998	7161	77.5%	0.6%	0.1%	0.6%	21.2%	6.1%	0.1%	0.6%	0.0%	14.4%
1999	7412	77.0%	0.7%	0.1%	0.9%	21.3%	7.6%	0.1%	1.0%	0.0%	12.6%
2000	7415	76.5%	0.5%	0.3%	0.3%	22.5%	8.0%	0.1%	0.8%	0.1%	13.4%
2001	7119	76.1%	0.6%	0.2%	0.6%	22.5%	8.9%	0.2%	0.9%	0.1%	12.3%
2002	6713	77.7%	0.8%	0.2%	0.9%	20.3%	8.4%	0.1%	0.9%	0.1%	10.8%
2003	7529	76.8%	0.6%	0.2%	1.1%	21.3%	10.0%	0.2%	0.8%	0.0%	10.3%
2004	8181	75.5%	0.9%	0.1%	0.9%	22.6%	12.7%	0.4%	1.3%	0.2%	7.9%
2005	7633	72.4%	0.7%	0.0%	0.0%	26.8%	21.7%	1.5%	0.9%	0.9%	1.8%
2006	7571	69.6%	0.8%	0.0%	0.1%	29.6%	25.3%	1.2%	0.8%	0.7%	1.6%
2007	7914	71.3%	0.9%	0.0%	0.0%	27.7%	23.3%	1.8%	1.0%	0.4%	1.1%
2008	8034	70.7%	0.7%	0.0%	0.1%	28.5%	23.7%	1.9%	1.0%	0.3%	1.6%
2009	9032	69.3%	1.2%	0.0%	0.1%	29.4%	24.3%	1.8%	1.3%	0.8%	1.2%
2010	8324	68.7%	1.3%	0.0%	0.1%	29.9%	23.1%	2.5%	1.1%	1.8%	1.4%

<b>Total Cases</b>	Cases disposed in a year
<b>Total Convictions</b>	Conviction rate for cases disposed
<b>Total Acquittals</b>	Acquittal rate for cases disposed
<b>Conditionally Discharged</b>	Conditional discharge rate for cases disposed
<b>Other Dispositions</b>	Cases not dismissed but which do not fit into column heading categories
<b>Total Dismissed</b>	Dismissal rate for all cases disposed
<b>Dismissed by Prosecutor</b>	Cases dismissed by a court subsequent to motion for dismissal by a prosecutor ( for net dismissal rate see page 7 )
<b>Dismissed By Court</b>	Cases dismissed by a judge
<b>Dismissed 6 Month Rule</b>	Cases dismissed under the six month rule
<b>Dismissed Failure To Appear</b>	Cases dismissed due to failure of an officer/witness to appear
<b>Other Dismissal</b>	Cases dismissed for other reasons

## DWI Cases Disposed For Calendar Years 1997 Through 2010

### Bernalillo Metropolitan Court By Year

	Total Cases	Total Convictions	Total Acquittals	Conditionally Discharged	Other Dispositions	Total Dismissed	Dismissed by Prosecutor	Dismissed by Court	Dismissed 6 Month Rule	Dismissed Failure To Appear	Other Dismissals
1997	2869	58.3%	1.9%	0.0%	0.1%	39.7%	5.5%	5.0%	3.1%	23.0%	3.1%
1998	5119	67.0%	2.0%	0.0%	0.0%	31.0%	3.9%	5.2%	2.1%	17.3%	2.6%
1999	4980	64.4%	2.6%	0.0%	0.1%	33.0%	3.3%	5.0%	4.1%	17.2%	3.4%
2000	4899	69.5%	1.6%	0.0%	0.0%	28.9%	4.3%	3.9%	3.7%	14.7%	2.3%
2001	6073	70.6%	1.4%	0.0%	0.1%	28.0%	4.7%	3.9%	4.0%	12.9%	2.5%
2002	6144	66.1%	1.6%	0.0%	0.0%	32.2%	4.7%	5.0%	4.6%	15.3%	2.7%
2003	6706	62.6%	1.8%	0.0%	0.0%	35.7%	6.9%	5.9%	5.5%	14.9%	2.5%
2004	6407	60.0%	2.0%	0.0%	0.0%	38.0%	5.0%	5.5%	5.3%	18.8%	3.3%
2005	6536	64.2%	2.0%	0.0%	0.0%	33.7%	4.7%	4.5%	2.8%	19.4%	2.3%
2006	5940	69.1%	2.0%	0.0%	0.0%	28.9%	8.4%	1.0%	1.3%	17.9%	0.4%
2007	6851	71.8%	1.3%	0.0%	0.0%	26.8%	9.3%	0.7%	1.4%	14.7%	0.7%
2008	7135	69.4%	0.7%	0.0%	0.0%	29.9%	9.4%	0.7%	0.8%	18.2%	0.9%
2009	6648	66.6%	0.7%	0.0%	0.0%	32.7%	13.6%	0.5%	0.7%	16.1%	1.8%
2010	5497	65.4%	2.0%	0.0%	0.0%	32.6%	14.3%	0.9%	0.3%	15.3%	1.7%

### Municipal Courts By Year

	Total Cases	Total Convictions	Total Acquittals	Conditionally Discharged	Other Dispositions	Total Dismissed	Dismissed by Prosecutor	Dismissed by Court	Dismissed 6 Month Rule	Dismissed Failure To Appear	Other Dismissals
1997	2315	98.1%	0.0%	0.0%	1.8%	0.0%	0.0%	0.0%	0.0%	0.0%	0.0%
1998	2435	98.4%	0.0%	0.0%	1.6%	0.0%	0.0%	0.0%	0.0%	0.0%	0.0%
1999	2284	98.1%	0.0%	0.0%	1.3%	0.6%	0.3%	0.0%	0.0%	0.0%	0.3%
2000	2472	96.9%	0.0%	0.0%	1.7%	1.3%	0.3%	0.0%	0.0%	0.0%	1.0%
2001	2332	98.2%	0.0%	0.0%	1.8%	0.0%	0.0%	0.0%	0.0%	0.0%	0.0%
2002	1725	97.8%	0.2%	0.0%	1.9%	0.1%	0.0%	0.1%	0.0%	0.0%	0.0%
2003	1761	98.5%	0.1%	0.0%	1.5%	0.0%	0.0%	0.0%	0.0%	0.0%	0.0%
2004	2233	97.3%	0.6%	0.0%	2.0%	0.1%	0.0%	0.0%	0.0%	0.0%	0.0%
2005	2137	95.9%	0.8%	0.0%	1.8%	1.5%	1.3%	0.1%	0.1%	0.0%	0.0%
2006	2224	84.7%	0.9%	0.0%	3.6%	10.8%	6.8%	1.9%	0.4%	0.3%	1.4%
2007	2298	88.3%	1.3%	0.0%	0.0%	10.4%	4.7%	3.5%	0.2%	0.3%	1.7%
2008	1923	87.5%	0.9%	0.0%	0.6%	11.0%	5.1%	1.8%	0.8%	0.4%	2.9%
2009	1833	87.0%	1.7%	0.0%	0.2%	11.0%	5.9%	1.4%	0.6%	0.1%	2.9%
2010	1730	87.6%	1.2%	0.0%	1.7%	9.5%	5.7%	1.0%	0.5%	0.1%	2.3%

<b>Total Cases</b>	Cases disposed in a year
<b>Total Convictions</b>	Conviction rate for cases disposed
<b>Total Acquittals</b>	Acquittal rate for cases disposed
<b>Conditionally Discharged</b>	Conditional discharge rate for cases disposed
<b>Other Dispositions</b>	Cases not dismissed but which do not fit into column heading categories
<b>Total Dismissed</b>	Dismissal rate for all cases disposed
<b>Dismissed by Prosecutor</b>	Cases dismissed by a court subsequent to motion for dismissal by a prosecutor ( for net dismissal rate see page 7 )
<b>Dismissed By Court</b>	Cases dismissed by a judge
<b>Dismissed 6 Month Rule</b>	Cases dismissed under the six month rule
<b>Dismissed Failure To Appear</b>	Cases dismissed due to failure of an officer/witness to appear
<b>Other Dismissal</b>	Cases dismissed for other reasons

## DWI Cases Disposed For Calendar Year 2010

### District Courts By Location

County	Total Cases	Total Convictions	Total Acquittals	Conditionally Discharged	Other Dispositions	Total Dismissed	Dismissed by Prosecutor	Dismissed by Court	Dismissed 6 Month Rule	Dismissed Failure To Appear	Other Dismissals
BERNALILLO	557	87.4%	0.0%	0.0%	0.0%	12.6%	9.7%	2.3%	0.5%	0.0%	0.0%
CATRON	3	100.0%	0.0%	0.0%	0.0%	0.0%	0.0%	0.0%	0.0%	0.0%	0.0%
CHAVES	75	84.0%	2.7%	0.0%	0.0%	13.3%	12.0%	1.3%	0.0%	0.0%	0.0%
CIBOLA	34	76.5%	2.9%	0.0%	0.0%	20.6%	20.6%	0.0%	0.0%	0.0%	0.0%
COLFAX	11	90.9%	0.0%	0.0%	0.0%	9.1%	9.1%	0.0%	0.0%	0.0%	0.0%
CURRY	159	79.9%	1.3%	0.0%	0.0%	18.9%	17.6%	0.6%	0.0%	0.0%	0.6%
DE BACA	4	75.0%	0.0%	0.0%	0.0%	25.0%	25.0%	0.0%	0.0%	0.0%	0.0%
DONA ANA	292	79.1%	2.4%	0.0%	0.0%	18.5%	17.8%	0.7%	0.0%	0.0%	0.0%
EDDY	45	80.0%	4.4%	0.0%	0.0%	15.6%	13.3%	2.2%	0.0%	0.0%	0.0%
GRANT	27	92.6%	0.0%	0.0%	0.0%	7.4%	3.7%	3.7%	0.0%	0.0%	0.0%
GUADALUPE	12	66.7%	8.3%	0.0%	0.0%	25.0%	25.0%	0.0%	0.0%	0.0%	0.0%
HARDING	0										
HIDALGO	6	66.7%	0.0%	0.0%	0.0%	33.3%	33.3%	0.0%	0.0%	0.0%	0.0%
LEA	54	66.7%	5.6%	0.0%	0.0%	27.8%	13.0%	9.3%	3.7%	0.0%	1.9%
LINCOLN	29	86.2%	3.4%	0.0%	0.0%	10.3%	6.9%	0.0%	0.0%	0.0%	3.4%
LOS ALAMOS	5	80.0%	0.0%	0.0%	0.0%	20.0%	20.0%	0.0%	0.0%	0.0%	0.0%
LUNA	17	64.7%	5.9%	0.0%	0.0%	29.4%	29.4%	0.0%	0.0%	0.0%	0.0%
MCKINLEY	83	74.7%	1.2%	0.0%	0.0%	24.1%	19.3%	2.4%	2.4%	0.0%	0.0%
MORA	5	80.0%	0.0%	0.0%	0.0%	20.0%	20.0%	0.0%	0.0%	0.0%	0.0%
OTERO	70	92.9%	0.0%	0.0%	0.0%	7.1%	7.1%	0.0%	0.0%	0.0%	0.0%
QUAY	7	85.7%	0.0%	0.0%	0.0%	14.3%	0.0%	0.0%	0.0%	0.0%	14.3%
RIO ARRIBA	55	54.5%	0.0%	0.0%	0.0%	45.5%	30.9%	14.5%	0.0%	0.0%	0.0%
ROOSEVELT	15	80.0%	6.7%	0.0%	0.0%	13.3%	13.3%	0.0%	0.0%	0.0%	0.0%
SAN JUAN	363	89.3%	2.2%	0.0%	0.0%	8.5%	7.2%	1.4%	0.0%	0.0%	0.0%
SAN MIGUEL	39	76.9%	2.6%	0.0%	0.0%	20.5%	17.9%	2.6%	0.0%	0.0%	0.0%
SANDOVAL	79	67.1%	1.3%	0.0%	0.0%	31.6%	26.6%	2.5%	2.5%	0.0%	0.0%
SANTA FE	125	64.0%	0.8%	0.0%	0.0%	35.2%	20.8%	9.6%	3.2%	0.0%	1.6%
SIERRA	10	70.0%	0.0%	0.0%	10.0%	20.0%	20.0%	0.0%	0.0%	0.0%	0.0%
SOCORRO	25	72.0%	0.0%	0.0%	0.0%	28.0%	8.0%	16.0%	4.0%	0.0%	0.0%
TAOS	24	62.5%	0.0%	0.0%	0.0%	37.5%	33.3%	0.0%	0.0%	0.0%	4.2%
TORRANCE	14	57.1%	0.0%	0.0%	0.0%	42.9%	35.7%	7.1%	0.0%	0.0%	0.0%
UNION	4	75.0%	0.0%	0.0%	0.0%	25.0%	25.0%	0.0%	0.0%	0.0%	0.0%
VALENCIA	28	64.3%	0.0%	0.0%	0.0%	35.7%	32.1%	3.6%	0.0%	0.0%	0.0%
Total	2276	80.6%	1.4%	0.0%	0.0%	17.9%	14.4%	2.6%	0.6%	0.0%	0.3%

<b>Total Cases</b>	Cases disposed in a year
<b>Total Convictions</b>	Conviction rate for cases disposed
<b>Total Acquittals</b>	Acquittal rate for cases disposed
<b>Conditionally Discharged</b>	Conditional discharge rate for cases disposed
<b>Other Dispositions</b>	Cases not dismissed but which do not fit into column heading categories
<b>Total Dismissed</b>	Dismissal rate for all cases disposed
<b>Dismissed by Prosecutor</b>	Cases dismissed by a court subsequent to motion for dismissal by a prosecutor ( for net dismissal rate see page 7 )
<b>Dismissed By Court</b>	Cases dismissed by a judge
<b>Dismissed 6 Month Rule</b>	Cases dismissed under the six month rule
<b>Dismissed Failure To Appear</b>	Cases dismissed due to failure of an officer/witness to appear
<b>Other Dismissal</b>	Cases dismissed for other reasons

## DWI Cases Disposed For Calendar Year 2010

### Magistrate Courts By Location

County	Total Cases	Total Convictions	Total Acquittals	Conditionally Discharged	Other Dispositions	Total Dismissed	Dismissed by Prosecutor	Dismissed by Court	Dismissed 6 Month Rule	Dismissed Failure To Appear	Other Dismissals
CATRON	21	61.9%	4.8%	0.0%	0.0%	33.3%	28.6%	0.0%	0.0%	0.0%	4.8%
CHAVES	313	76.7%	1.3%	0.0%	0.0%	22.0%	20.8%	0.6%	0.3%	0.3%	0.0%
CIBOLA	273	63.0%	1.1%	0.0%	0.0%	35.9%	24.2%	6.6%	0.0%	5.1%	0.0%
COLFAX	57	75.4%	1.8%	0.0%	0.0%	22.8%	22.8%	0.0%	0.0%	0.0%	0.0%
CURRY	367	62.1%	1.4%	0.0%	0.3%	36.2%	33.5%	2.2%	0.3%	0.0%	0.3%
DE BACA	8	75.0%	0.0%	0.0%	0.0%	25.0%	25.0%	0.0%	0.0%	0.0%	0.0%
DONA ANA	1403	71.9%	0.5%	0.0%	0.0%	27.6%	26.7%	0.2%	0.4%	0.0%	0.2%
EDDY	197	91.9%	1.0%	0.0%	0.0%	7.1%	5.1%	1.5%	0.0%	0.5%	0.0%
GRANT	203	80.3%	0.5%	0.0%	0.0%	19.2%	14.8%	3.9%	0.5%	0.0%	0.0%
GUADALUPE	58	82.8%	5.2%	0.0%	0.0%	12.1%	12.1%	0.0%	0.0%	0.0%	0.0%
HARDING	2	0.0%	50.0%	0.0%	0.0%	50.0%	50.0%	0.0%	0.0%	0.0%	0.0%
HIDALGO	75	84.0%	0.0%	0.0%	0.0%	16.0%	8.0%	4.0%	0.0%	1.3%	2.7%
LEA	155	80.0%	0.6%	0.0%	0.0%	19.4%	15.5%	2.6%	0.6%	0.0%	0.6%
LINCOLN	177	78.0%	0.6%	0.0%	0.0%	21.5%	20.3%	0.0%	0.0%	0.0%	1.1%
LOS ALAMOS	30	76.7%	0.0%	0.0%	0.0%	23.3%	23.3%	0.0%	0.0%	0.0%	0.0%
LUNA	106	68.9%	1.9%	0.0%	0.0%	29.2%	25.5%	3.8%	0.0%	0.0%	0.0%
MCKINLEY	929	70.4%	1.1%	0.0%	0.0%	28.5%	22.1%	3.8%	1.7%	0.6%	0.3%
MORA	31	80.6%	0.0%	0.0%	0.0%	19.4%	19.4%	0.0%	0.0%	0.0%	0.0%
OTERO	150	83.3%	0.7%	0.0%	0.0%	16.0%	15.3%	0.7%	0.0%	0.0%	0.0%
QUAY	63	65.1%	3.2%	0.0%	0.0%	31.7%	25.4%	0.0%	0.0%	0.0%	6.3%
RIO ARRIBA	310	51.9%	0.6%	0.0%	0.3%	47.1%	34.2%	1.0%	2.6%	1.0%	8.4%
ROOSEVELT	119	86.6%	0.8%	0.0%	0.0%	12.6%	10.9%	1.7%	0.0%	0.0%	0.0%
SAN JUAN	709	82.7%	1.6%	0.0%	0.0%	15.8%	9.4%	3.1%	0.6%	1.4%	1.3%
SAN MIGUEL	281	82.2%	2.5%	0.0%	0.0%	15.3%	13.2%	1.8%	0.0%	0.0%	0.4%
SANDOVAL	284	47.2%	1.8%	0.0%	1.1%	50.0%	36.6%	7.7%	3.2%	0.7%	1.8%
SANTA FE	859	53.2%	3.0%	0.0%	0.6%	43.2%	32.0%	3.1%	3.7%	3.1%	1.2%
SIERRA	100	71.0%	3.0%	0.0%	0.0%	26.0%	24.0%	1.0%	1.0%	0.0%	0.0%
SOCORRO	173	69.9%	1.2%	0.0%	0.0%	28.9%	22.5%	3.5%	0.6%	2.3%	0.0%
TAOS	281	53.7%	0.4%	0.0%	0.0%	45.9%	39.1%	3.9%	2.8%	0.0%	0.0%
TORRANCE	83	84.3%	0.0%	0.0%	0.0%	15.7%	10.8%	2.4%	1.2%	1.2%	0.0%
UNION	15	73.3%	0.0%	0.0%	0.0%	26.7%	20.0%	6.7%	0.0%	0.0%	0.0%
VALENCIA	492	50.8%	1.4%	0.0%	0.0%	47.8%	18.7%	2.8%	0.6%	16.5%	9.1%
Total	8324	68.7%	1.3%	0.0%	0.1%	29.9%	23.1%	2.5%	1.1%	1.8%	1.4%

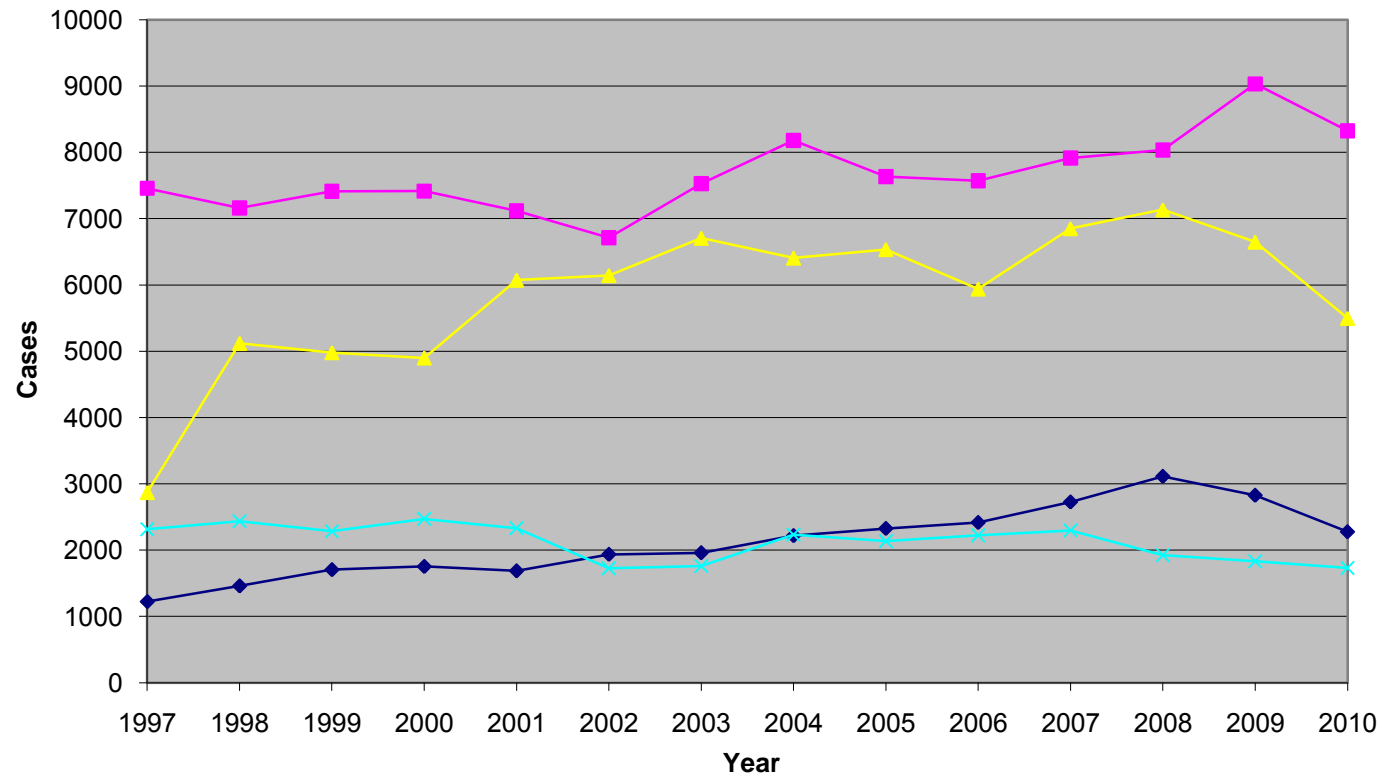
Total Cases	Cases disposed in a year
Total Convictions	Conviction rate for cases disposed
Total Acquittals	Acquittal rate for cases disposed
Conditionally Discharged	Conditional discharge rate for cases disposed
Other Dispositions	Cases not dismissed but which do not fit into column heading categories
Total Dismissed	Dismissal rate for all cases disposed
Dismissed by Prosecutor	Cases dismissed by a court subsequent to motion for dismissal by a prosecutor ( for net dismissal rate see page 7 )
Dismissed By Court	Cases dismissed by a judge
Dismissed 6 Month Rule	Cases dismissed under the six month rule
Dismissed Failure To Appear	Cases dismissed due to failure of an officer/witness to appear
Other Dismissal	Cases dismissed for other reasons



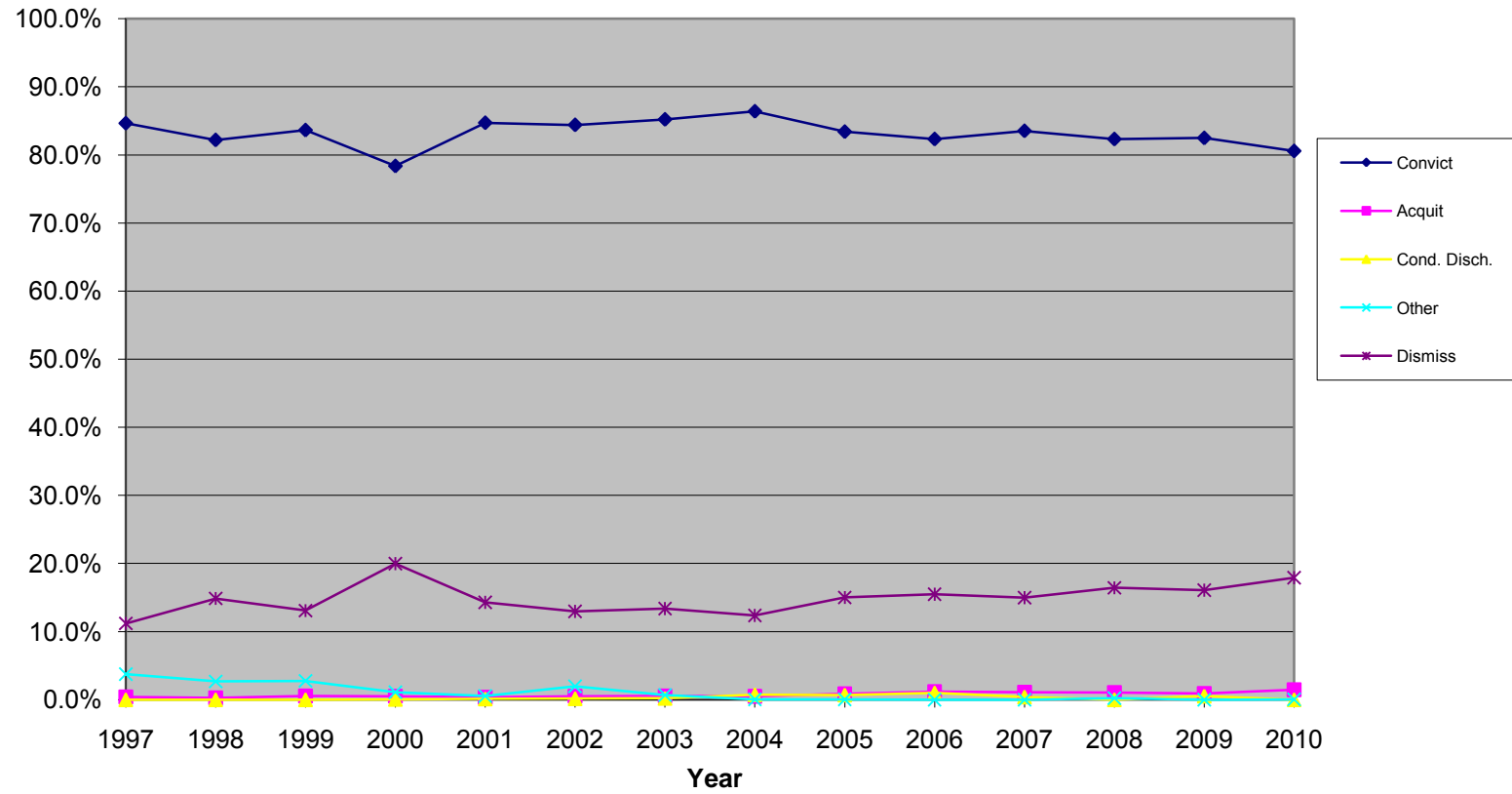
**Impact of Magistrate Court and Bernalillo Metropolitan  
Court DWI Cases Refiled in District Court on Dismissed  
by Prosecutor Rate for 2010**

County	Cases Dismissed by Prosecutor	Cases Refiled as Felony DWI By Prosecutor	Percentage of Prosecutor Dismissals Refiled as Felony DWI	Total Dismissal Rate Before Subtracting Refiled Cases	Net Dismissal Rate After Subtracting Refiled Cases
BERNALILLO	786	124	15.8%	32.6%	30.3%
CATRON	6	0	0.0%	33.3%	33.3%
CHAVES	65	0	0.0%	22.0%	22.0%
CIBOLA	66	0	0.0%	35.9%	35.9%
COLFAX	13	2	15.4%	22.8%	19.3%
CURRY	123	84	68.3%	36.2%	13.4%
DE BACA	2	0	0.0%	25.0%	25.0%
DONA ANA	375	172	45.9%	27.6%	15.3%
EDDY	10	0	0.0%	7.1%	7.1%
GRANT	30	6	20.0%	19.2%	16.3%
GUADALUPE	7	0	0.0%	12.1%	12.1%
HARDING	1	0	0.0%	50.0%	50.0%
HIDALGO	6	0	0.0%	16.0%	16.0%
LEA	24	0	0.0%	19.4%	19.4%
LINCOLN	36	6	16.7%	21.5%	18.1%
LOS ALAMOS	7	1	14.3%	23.3%	20.0%
LUNA	27	2	7.4%	29.2%	27.4%
MCKINLEY	205	19	9.3%	28.5%	26.5%
MORA	6	0	0.0%	19.4%	19.4%
OTERO	23	3	13.0%	16.0%	14.0%
QUAY	16	0	0.0%	31.7%	31.7%
RIO ARRIBA	106	3	2.8%	47.1%	46.1%
ROOSEVELT	13	7	53.8%	12.6%	6.7%
SAN JUAN	67	2	3.0%	15.8%	15.5%
SAN MIGUEL	37	0	0.0%	15.3%	15.3%
SANDOVAL	104	0	0.0%	50.0%	50.0%
SANTA FE	275	50	18.2%	43.2%	37.4%
SIERRA	24	0	0.0%	26.0%	26.0%
SOCORRO	39	0	0.0%	28.9%	28.9%
TAOS	110	9	8.2%	45.9%	42.7%
TORRANCE	9	0	0.0%	15.7%	15.7%
UNION	3	1	33.3%	26.7%	20.0%
VALENCIA	92	0	0.0%	47.8%	47.8%
Total	2713	491	18.1%	28.8%	27.4%

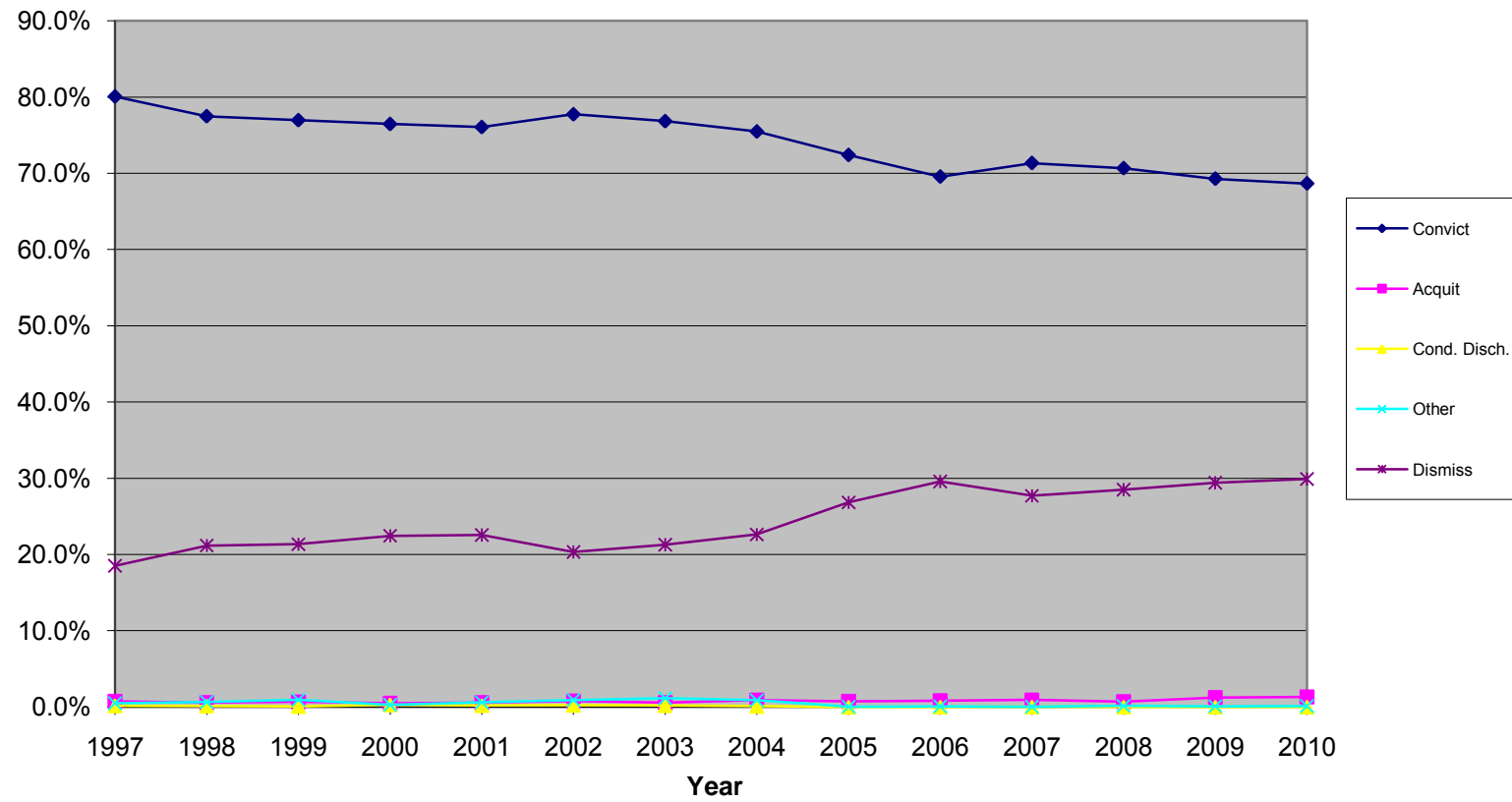
### DWI Cases Adjudicated By Year



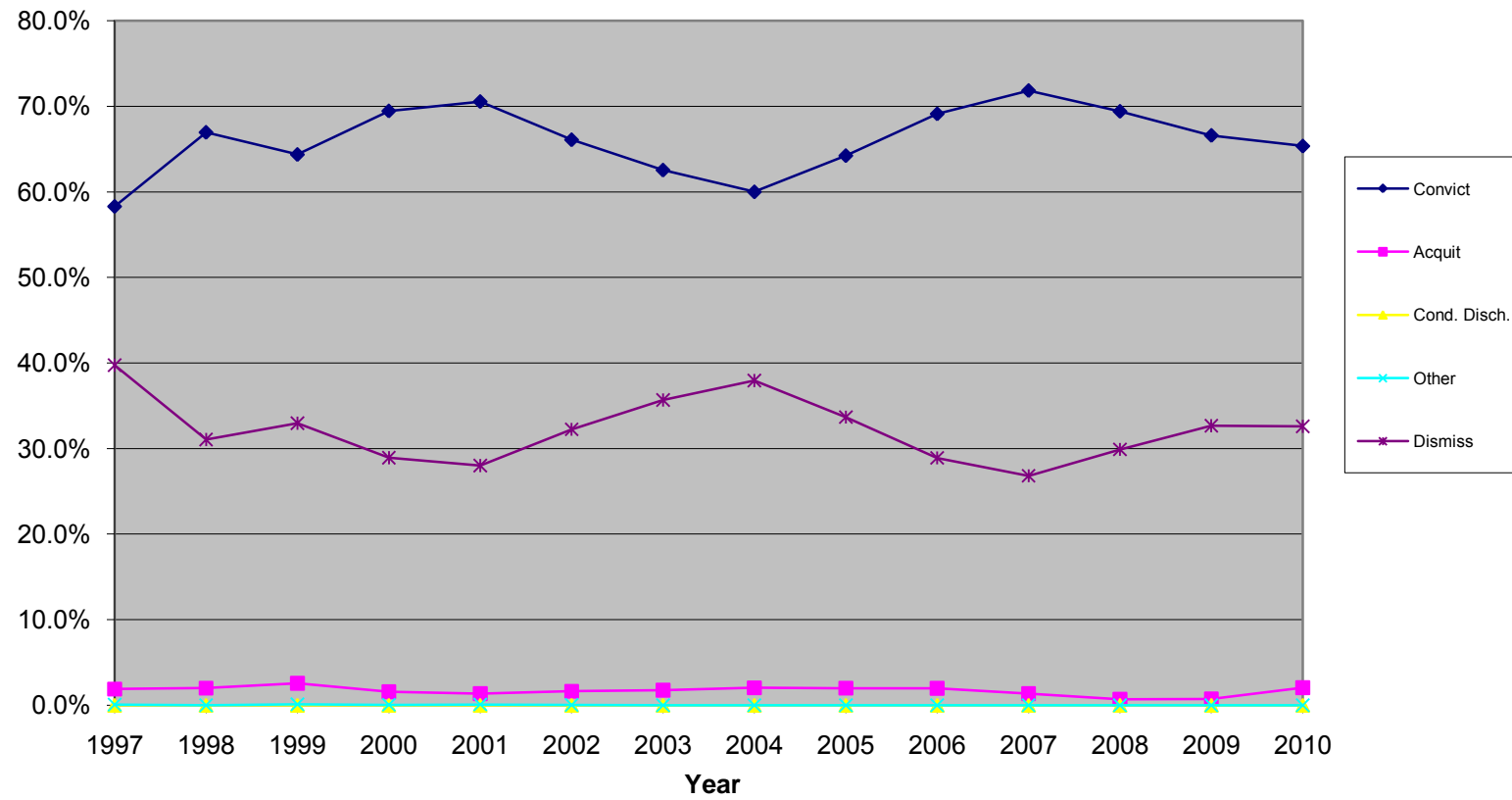
## District Courts Dispositions By Year



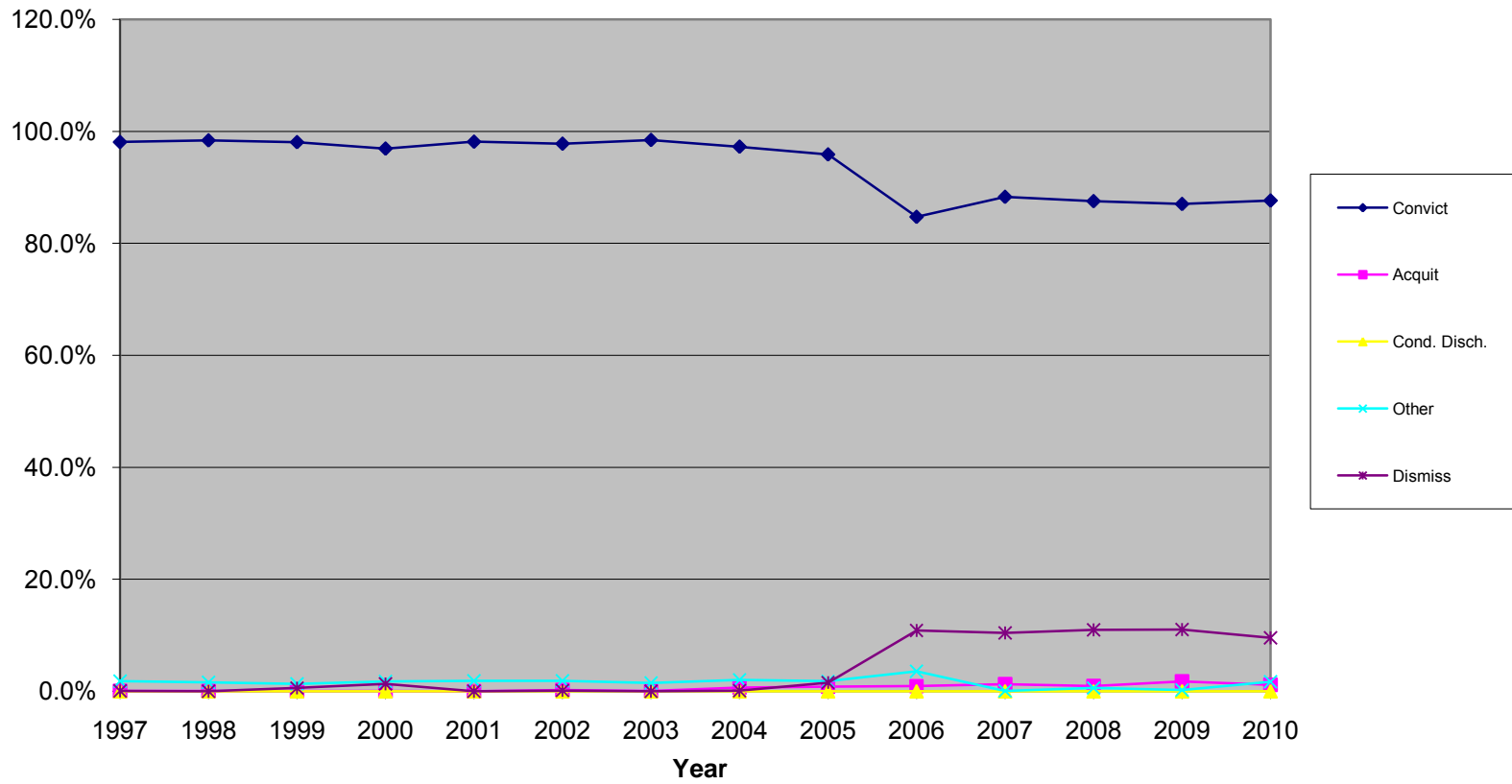
## Magistrate Courts Dispositions By Year



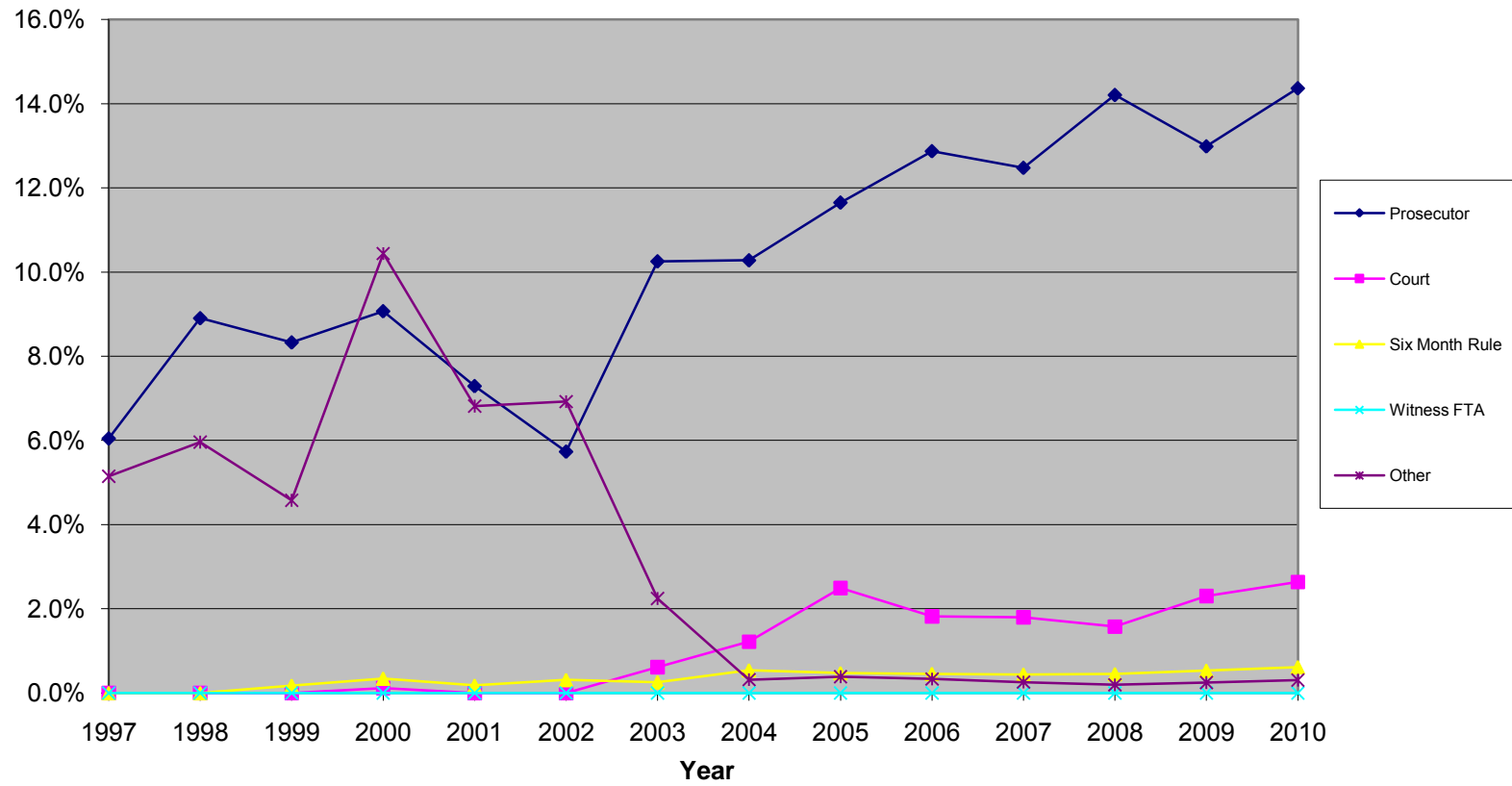
## Bern. Metropolitan Court Dispositions By Year



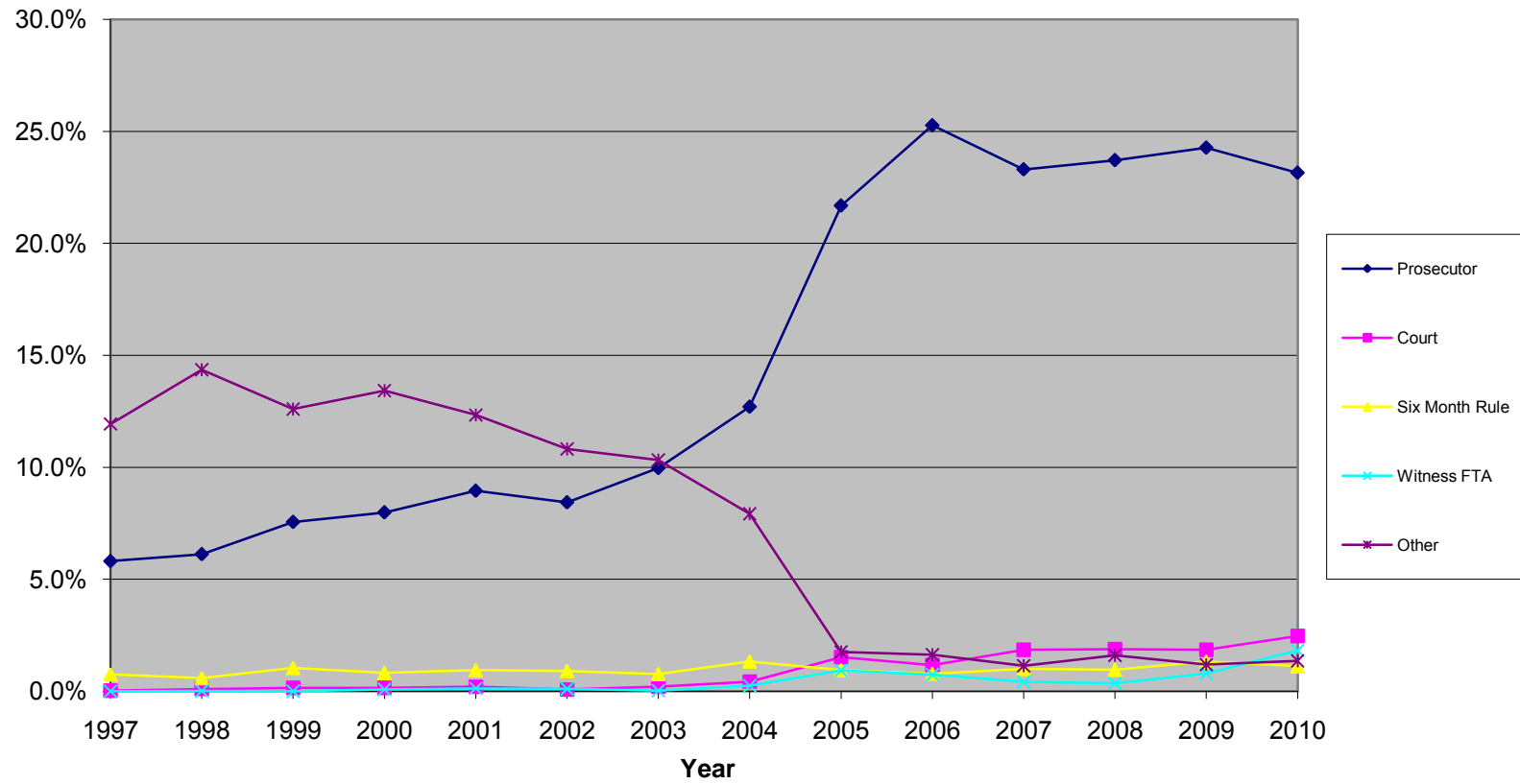
## Municipal Courts Dispositions By Year



## District Courts Dismissals

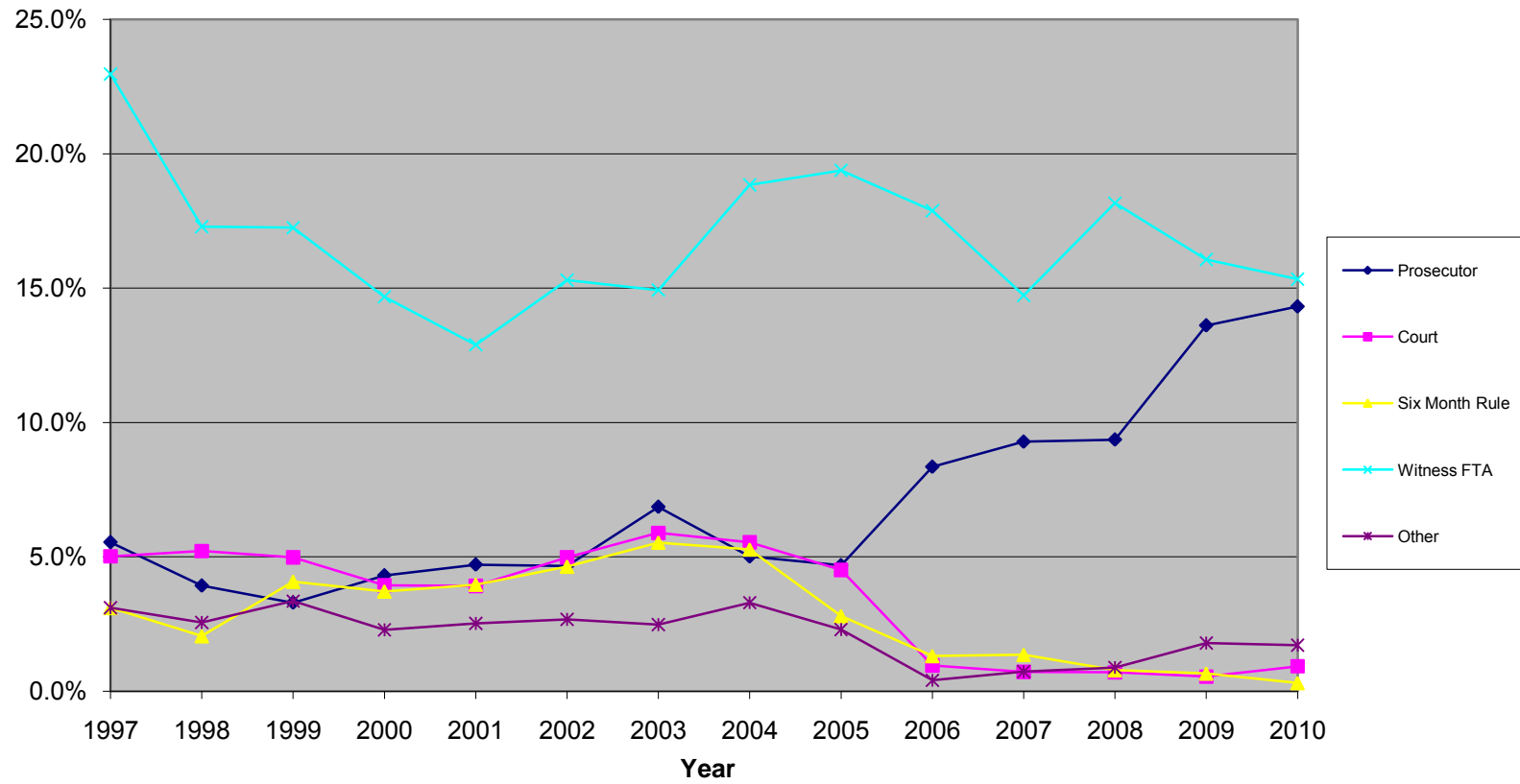


## Magistrate Courts Dismissals





## Bern. Metro. Dismissals



## Municipal Courts Dismissals

